



Meridian House

Juniper Drive, Battersea Reach, SW18 1QS

Asking Price £1,100,000

This exquisite 9th floor apartment boasts comfort cooling, secure underground parking & two balconies offering scenic river views. Spread over approximately 1,235ft², accommodation comprises three double bedrooms, two luxurious bathrooms (one en-suite), immense open-plan reception with dining area, breakfast bar & state-of-the-art kitchen. The elite level specification features fitted Miele appliances, wine cooler, quartz surfaces, integrated wardrobes, mood lighting, wood flooring, underfloor heating & separate utility / storage cupboards. Floor-to-ceiling windows immerse this west-facing property in natural light.

Battersea Reach is an award-winning riverside development, located moments from the transport links of Wandsworth Town & Clapham Junction. Residents benefit from 24-hour concierge & an exclusive gym, as well as on-site amenities like Tesco Express, Young's Bar & Restaurant, Edible Foods Café, yue float wellness centre, healthcare clinic & beauty salon.

Leasehold - 999 years from 2004. Service charge £9,016.08pa & Ground rent £950pa. Council tax band G.

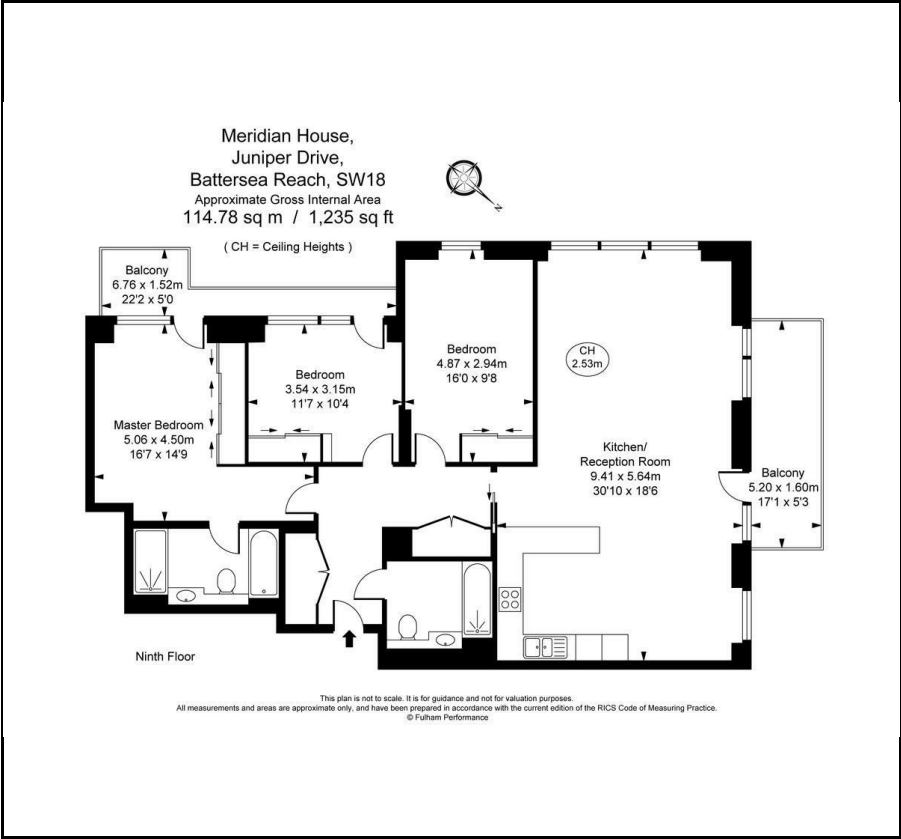
- 9th Floor / 1,235ft² Apartment
- 3 Bedrooms / 2 Bathrooms
- Balconies With River Views
- Underground Parking
- Comfort Cooling
- Grand Open-Plan Reception
- Miele Kitchen Appliances
- Nearby Rail / Bus / River Bus
- Tesco, Café, Restaurant, Bar, Spa
- Residents' Gym / 24-7 Concierge

Viewing

Please contact our Messila Residential Office on 020 7586 6699 if you wish to arrange a viewing appointment for this property or require further information.



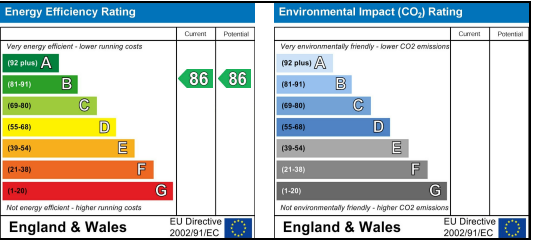
Floor Plan



Area Map



Energy Efficiency Graph



These particulars, whilst believed to be accurate are set out as a general outline only for guidance and do not constitute any part of an offer or contract. Intending purchasers should not rely on them as statements of representation of fact, but must satisfy themselves by inspection or otherwise as to their accuracy. No person in this firms employment has the authority to make or give any representation or warranty in respect of the property.