



Marina Point

Lensbury Avenue, Fulham, SW6 2GX

£1,038 Per Week

A spacious three double bedroom apartment situated on the second floor within the prestigious 'Imperial Wharf' development with style and space.

This property comprises of, entrance hallway, spacious reception room, with semi-open plan kitchen, Master bedroom has ensuite bathroom and a dressing room, two further double bedrooms, and second family bathroom. The flat also benefits from having Secure entry, wood flooring, 24 hour concierge, balcony.

It is well located within a few mins walk of Imperial Wharf Station along with other excellent transport links.

Available now and is offered furnished for long let.

Viewing

Please contact our Messila Residential Office on 020 7586 6699 if you wish to arrange a viewing appointment for this property or require further information.

- Three Double Bedrooms
- Two Bathrooms
- Second Floor
- 24 Hour Concierge
- Wooden Flooring



3



2

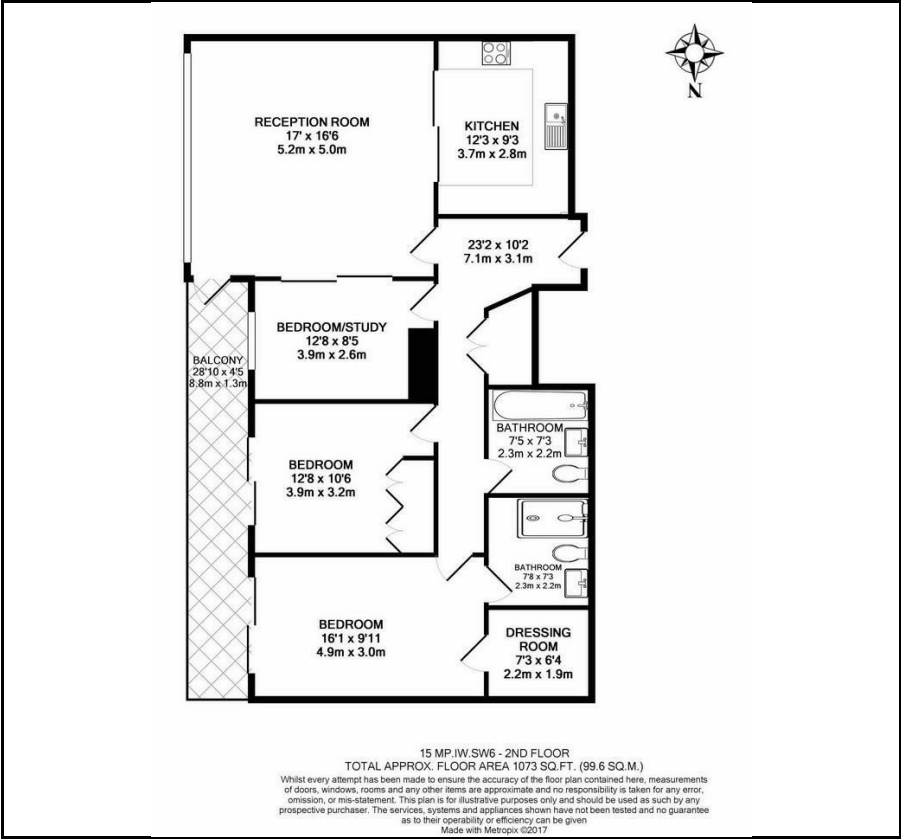


1

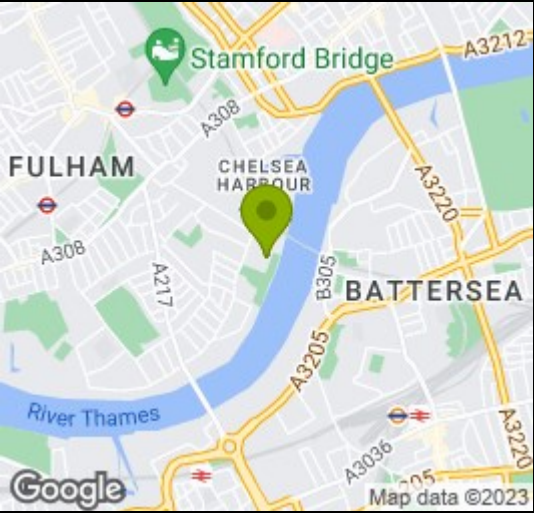


C

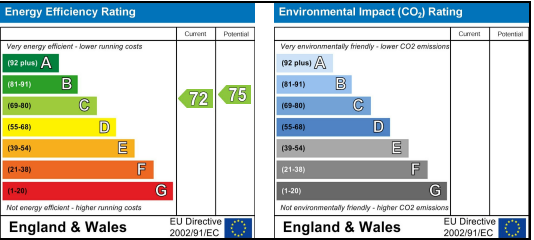
Floor Plan



Area Map



Energy Efficiency Graph



These particulars, whilst believed to be accurate are set out as a general outline only for guidance and do not constitute any part of an offer or contract. Intending purchasers should not rely on them as statements of representation of fact, but must satisfy themselves by inspection or otherwise as to their accuracy. No person in this firms employment has the authority to make or give any representation or warranty in respect of the property.