



Sophora House

342 Queenstown Road, Battersea, SW11 8BW

Asking Price £1,200,000

stunning two-bedroom, two-bathroom apartment with a large private balcony, on the 6th floor set within a new-build development in Battersea Park and boasting concierge, resident's gym and hydrotherapy pool.

Viewing

Please contact our Messila Residential Office on 020 7586 6699 if you wish to arrange a viewing appointment for this property or require further information.



2



2

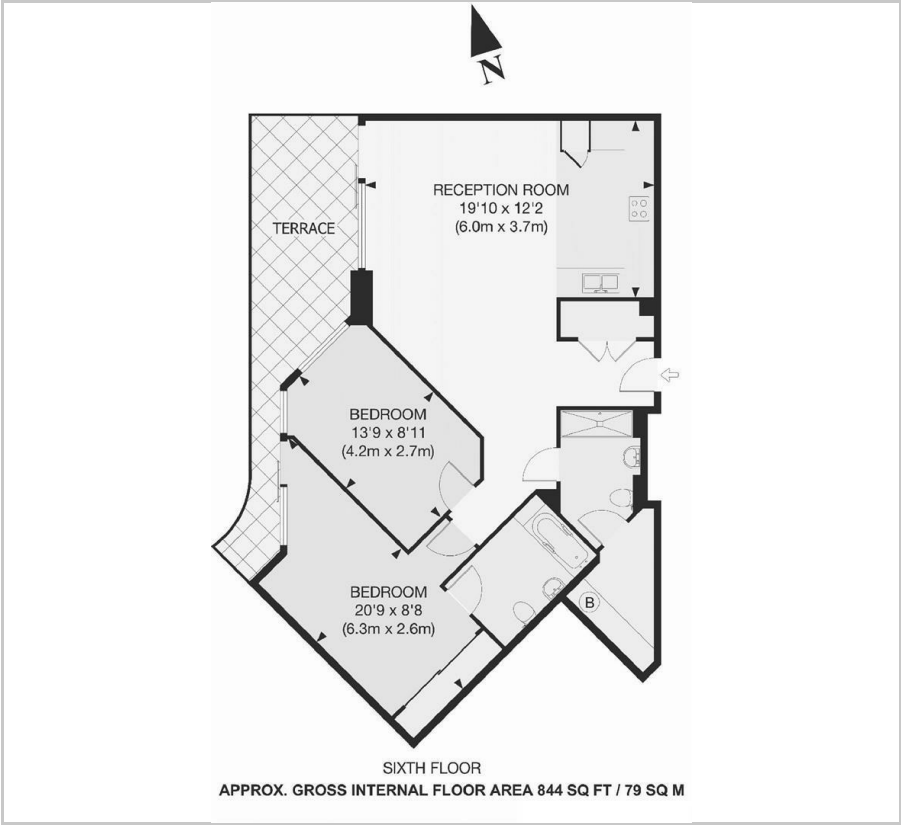


1



B

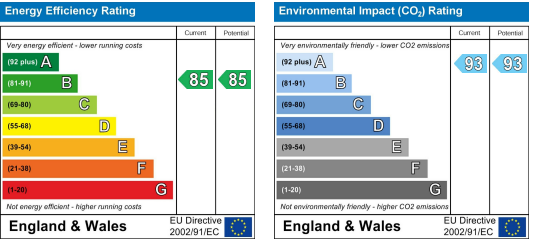
Floor Plan



Area Map



Energy Efficiency Graph



These particulars, whilst believed to be accurate are set out as a general outline only for guidance and do not constitute any part of an offer or contract. Intending purchasers should not rely on them as statements of representation of fact, but must satisfy themselves by inspection or otherwise as to their accuracy. No person in this firms employment has the authority to make or give any representation or warranty in respect of the property.