



## Cascade Court

1 Sopwith Way, London, SW11 8NS

**Asking Price £1,850,000**

An excellent opportunity to purchase newly Air Conditioning three double bedroom, two bathroom apartment with balcony overlooking Battersea Park. The development is the latest edition along Chelsea Bridge Road, and benefits from direct views over Battersea Park and is located within 5 minutes walk of 'Battersea Park' station. The property comprises of:- Entrance hallway with plenty of storage, extremely spacious living room with door leading out onto a balcony, semi-open plan kitchen, three excellent sized double bedrooms ( master with en-suite bathroom), family bathroom and ..... The property also benefits from having 24 hour concierge, access to residents gym and swimming pool and secure underground parking space. The property is offered unfurnished and is available to sale.

LEASEHOLD: 995 yrs

SERVICE CHARGE & GROUND RENT : £5,300 Per Annum

BOROUGH : WANDSWORTH BOROUGH COUNCIL

- Stunning View
- 24 hour concierge
- Balcony
- Terrace
- Air Conditioned
- 5 minutes walk of 'Battersea Park' station.
- Gym and swimming pool
- Secure underground parking space

### Viewing

Please contact our Messila Residential Office on 020 7586 6699 if you wish to arrange a viewing appointment for this property or require further information.



3



2



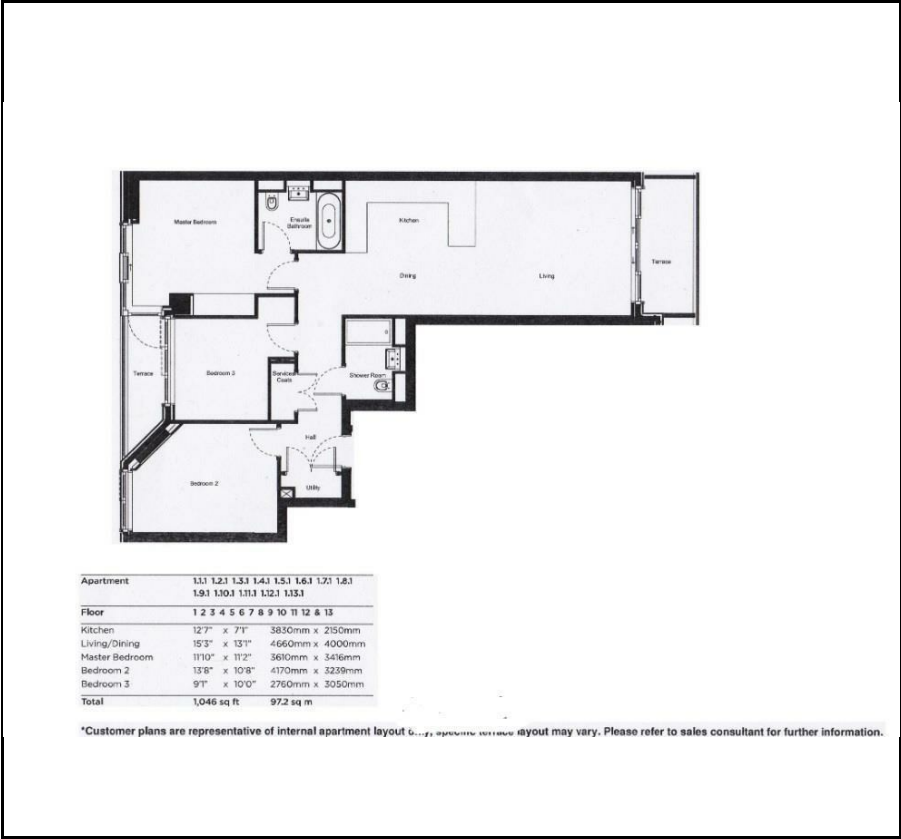
1



B



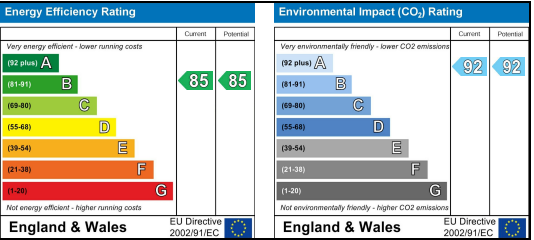
Floor Plan



Area Map



Energy Efficiency Graph



These particulars, whilst believed to be accurate are set out as a general outline only for guidance and do not constitute any part of an offer or contract. Intending purchasers should not rely on them as statements of representation of fact, but must satisfy themselves by inspection or otherwise as to their accuracy. No person in this firms employment has the authority to make or give any representation or warranty in respect of the property.