



Devonport

Southwick Street, Paddington, W2 2QH

Asking Price £595,000

A well presented and spacious one double bedroom apartment on the third floor of a secure 24 hour portered building with well-maintained private gardens moments walk from both Paddington station and Marble Arch. This fine flat comprises of:- Entrance Hallway with storage, bright large living room leading to an internal fitted separate kitchen with integrated appliances. Spacious double bedroom with full length fitted wardrobes, bathroom with shower/wc.

The property also benefits from having lift access, 24 hour porter, fine communal gardens.

The property would make an ideal pied a terre and/or rental investment.

Leasehold with apprx 153 years

Service charge - £ 4980 per annum

Ground rent - £ 1100 per annum

- Refurbished
- One Double Bedroom
- Third Floor (lift)
- Spacious
- Plenty of storage
- Great location

Viewing

Please contact our Messila Residential Office on 020 7586 6699 if you wish to arrange a viewing appointment for this property or require further information.



1



1

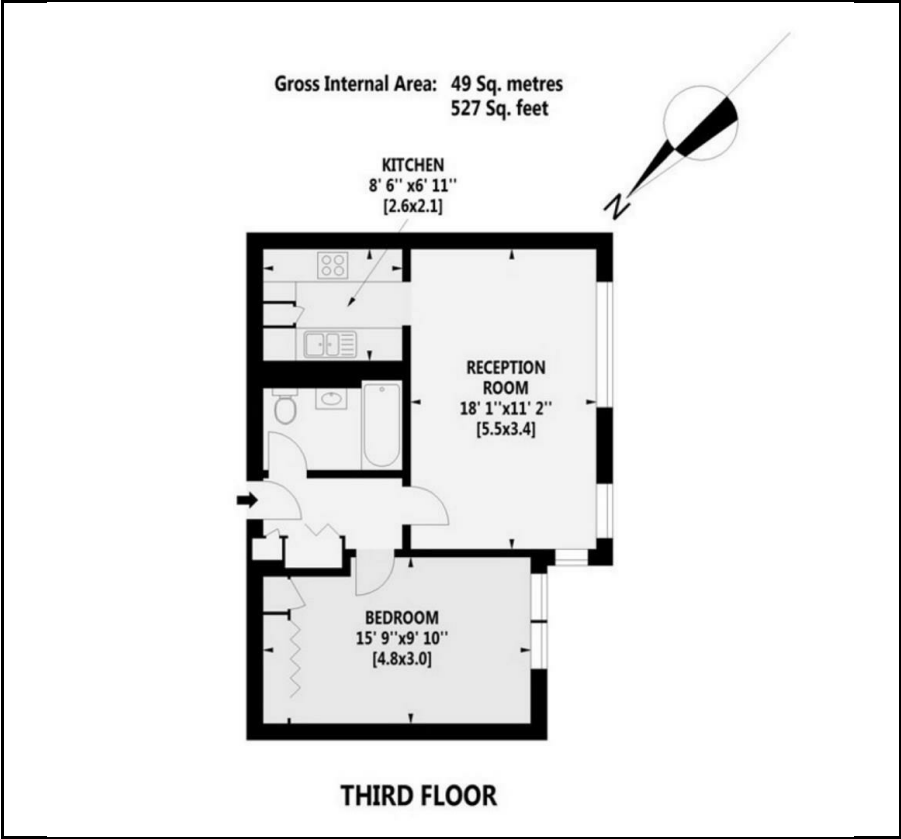


1



C

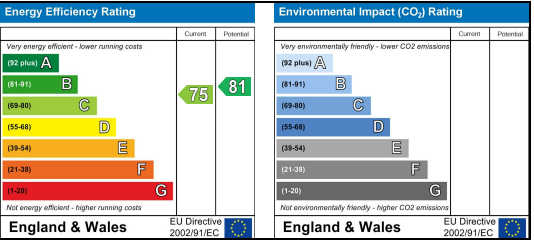
Floor Plan



Area Map



Energy Efficiency Graph



These particulars, whilst believed to be accurate are set out as a general outline only for guidance and do not constitute any part of an offer or contract. Intending purchasers should not rely on them as statements of representation of fact, but must satisfy themselves by inspection or otherwise as to their accuracy. No person in this firms employment has the authority to make or give any representation or warranty in respect of the property.