



Porchester Place

Hyde Park, W2 2PF

Asking Price £775,000

A well proportioned and smartly presented two double bedroom bright apartment with delightful views right across the city. Located on the 16th floor with superb London skyline view, this is an extremely well maintained portered block within Connaught Village, Hyde Park.

Offering modern open plan fitted kitchen and reception with ample storage. The property is found just moments away from the vibrant shopping district of March Arch, Oxford Street, Hyde Park and Paddington. Marble Arch underground station is within close proximity.

Tenure - 153 years remaining (approximately)

Service Charge- £18952 per annum (approximately)

Ground Rent- £0 per annum (approximately)

EPC Rating- C

- Two Double Bedrooms
- 16th Floor (with lift)
- Amazing Views
- 24 Hour Concierge
- Wooden Flooring
- Secure Entry
- Close to Hyde Park

Viewing

Please contact our Messila Residential Office on 020 7586 6699 if you wish to arrange a viewing appointment for this property or require further information.



2



2

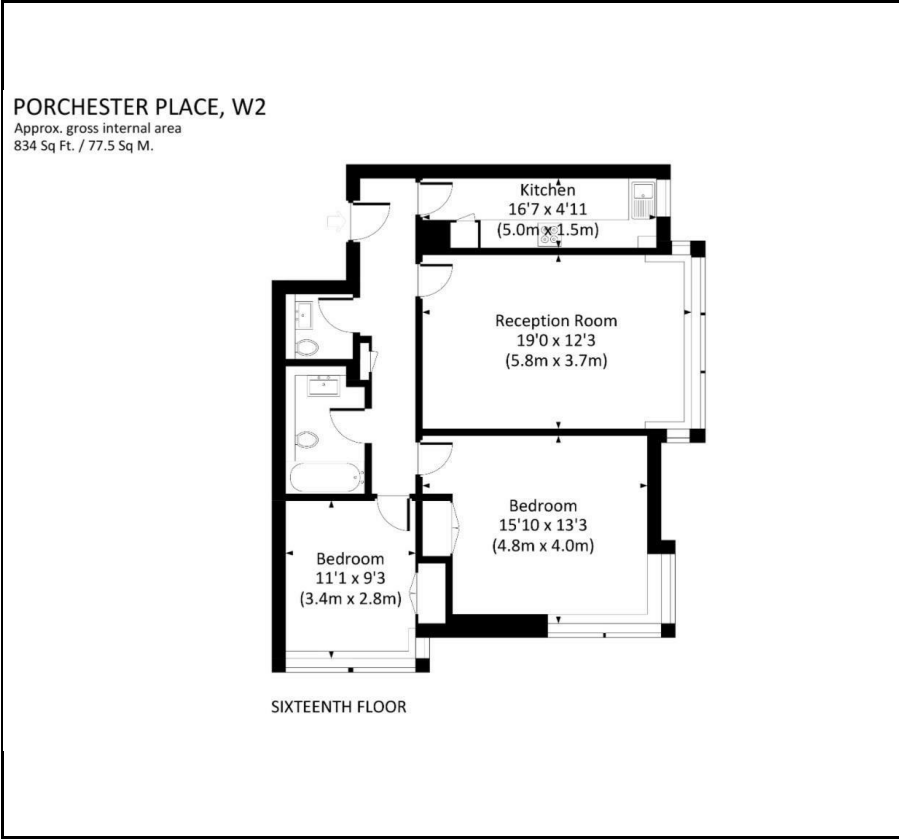


1



C

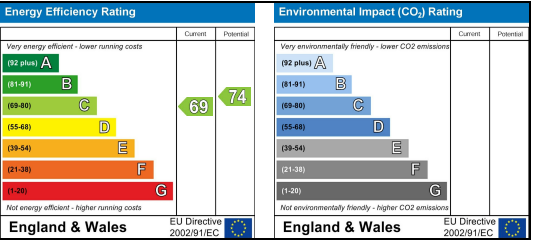
Floor Plan



Area Map



Energy Efficiency Graph



These particulars, whilst believed to be accurate are set out as a general outline only for guidance and do not constitute any part of an offer or contract. Intending purchasers should not rely on them as statements of representation of fact, but must satisfy themselves by inspection or otherwise as to their accuracy. No person in this firms employment has the authority to make or give any representation or warranty in respect of the property.