

Altissima House

340 Queenstown Road, London, SW11 8BY

Asking Price £1,550,000

A superb opportunity to purchase two bedroom park and courtyard facing apartment. The apartment includes two double bedrooms, two bathrooms, and an open plan kitchen and reception room which leads out onto the generously sized balcony.

Apartment provides dedicated 24-hour concierge service is on hand to respond to residents day-to-day needs. Very well finished and quality engineered timber flooring, the living areas are truly impressive.

Premises includes gymnasium, underground car park and two stunning landscaped gardens; one a sunken courtyard space, the other a landscaped courtyard at street level.

LEASEHOLD: 996 yrs

SERVICE CHARGE & GROUND RENT : £4,200 Per Annum

BOROUGH : WANDSWORTH BOROUGH COUNCIL

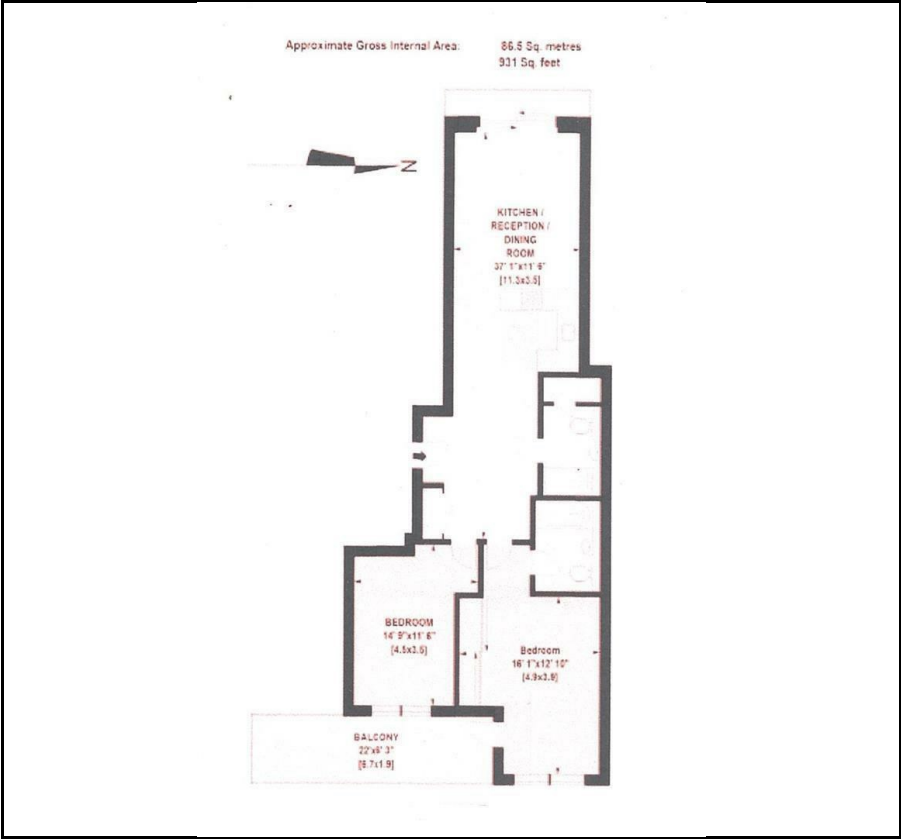
Viewing

Please contact our Messila Residential Office on 020 7586 6699 if you wish to arrange a viewing appointment for this property or require further information.

- 24-hour concierge service
- Gymnasium
- Courtyard space
- Balcony



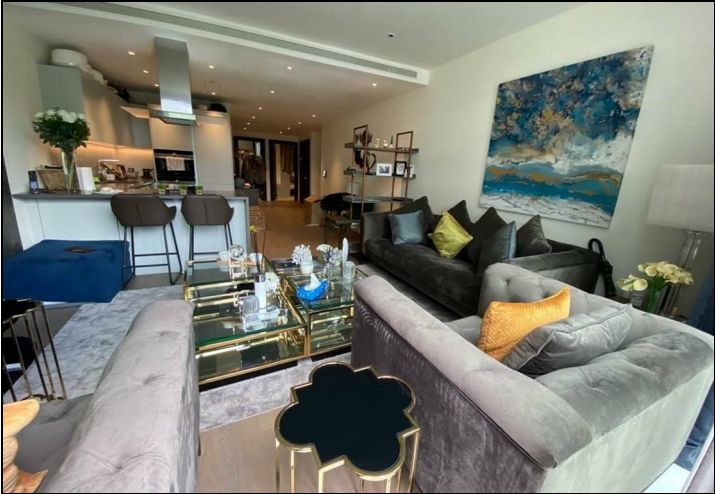
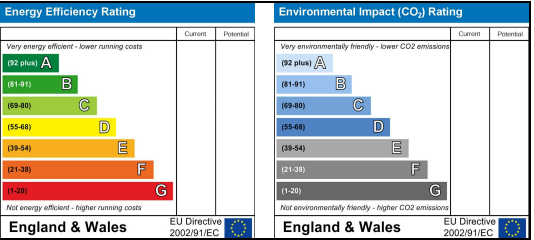
Floor Plan



Area Map



Energy Efficiency Graph



These particulars, whilst believed to be accurate are set out as a general outline only for guidance and do not constitute any part of an offer or contract. Intending purchasers should not rely on them as statements of representation of fact, but must satisfy themselves by inspection or otherwise as to their accuracy. No person in this firms employment has the authority to make or give any representation or warranty in respect of the property.