

# Castle Wildish



## Stanley Gardens , Hersham, KT12 4HB

Viewing Strictly By Appointment Only Saturday 1st October 2022 10am-12pm

Castle Wildish are pleased to offer this charming two bedroom modern Home, located in a much sought after private development. The property offers a newly redecorated interior, plus brand new carpets throughout.

Features include a good size living room, modern fitted kitchen, easy maintenance rear garden and two private parking spaces.

Hersham Village Centre and Walton on Thames Mainline Station are both within easy walking distance.

To be sold with no onward chain!

**Offers Over £425,000**

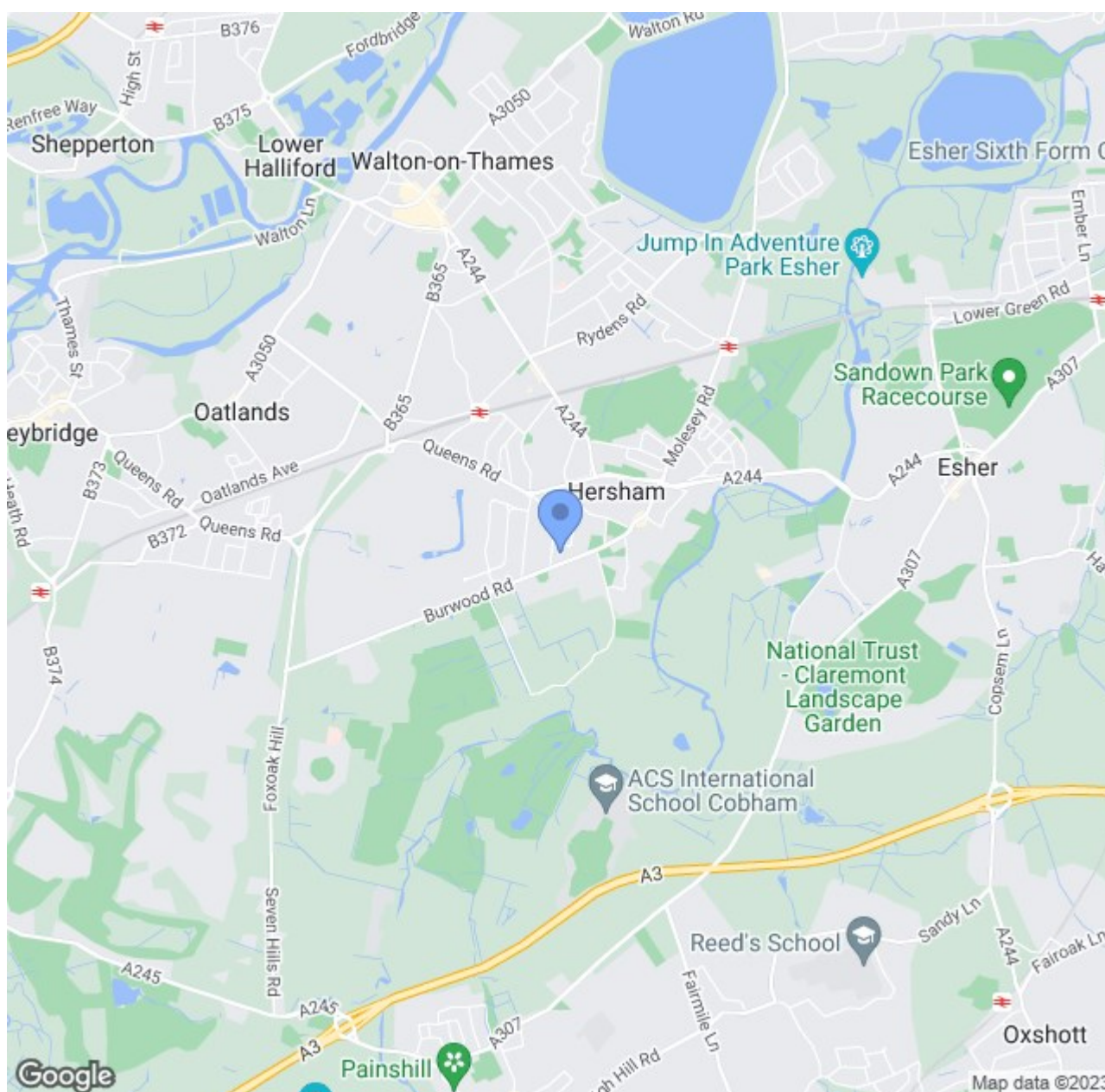


# Stanley Gardens

, Hersham, KT12 4HB



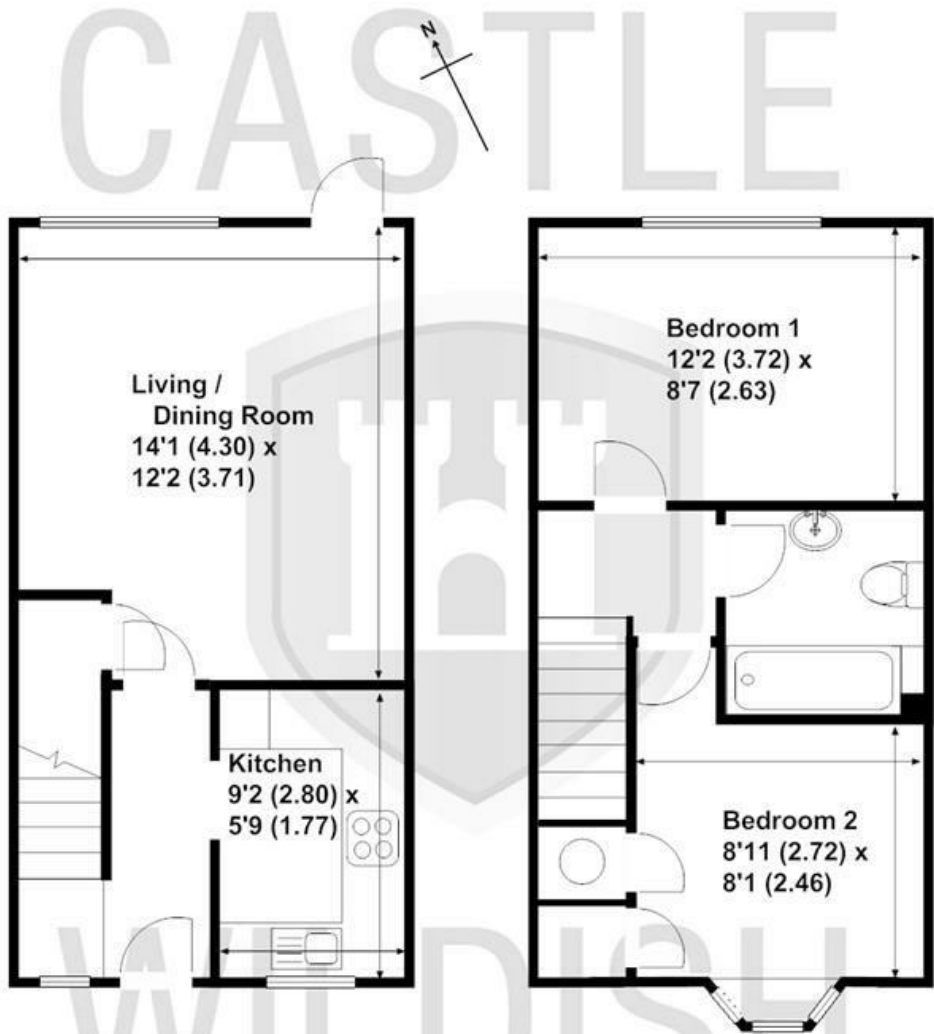
- Private Road Location
- Newly Redecorated Throughout
- Easy Access To Walton on Thames Mainline Station
- Short Walk Of Hersham Village Centre
- Modern Fitted Kitchen
- Full Gas Central Heating
- Two Allocated Private Parking Spaces
- To Be Sold With No Onward Chain!





Stanley Gardens, Hersham

Approximate gross internal floor area 579 sq/ft - 54 sq/mtr



These plans are not drawn to scale and are for representational purposes only. The services, systems and appliances listed in these details have not been tested by Castle Wildish, and no guarantee is given to their operational ability or efficiency. Copyright Castle Wildish 2013. Order No: 08-0103. Created by www.visionwithin.co.uk

These particulars, whilst believed to be accurate are set out as a general outline only for guidance and do not constitute any part of an offer or contract. Intending purchasers should not rely on them as statements of representation of fact, but must satisfy themselves by inspection or otherwise as to their accuracy. No person in this firms employment has the authority to make or give any representation or warranty in respect of the property.

