

Castle Wildish



Ingrams Close , Hersham Village, KT12 5JH

Castle Wildish offer a rare chance to acquire one of these much sought after modern two storey town houses.

The property is located in a popular and quiet residential road within easy walking distance of both the Village Centre and Walton on Thames Mainline Station. The house does require a little updating, but this will definitely enhance the value.

The accommodation is laid out over two floors, with a large open plan living room, entrance hallway and kitchen breakfast room to the ground floor, plus a useful rear conservatory. The first floor enjoys two good size bedrooms, which can easily be converted to three, by splitting the rear bedroom in two and a large family shower room, previously a bathroom and separate W.C.

To be sold with no onward chain!

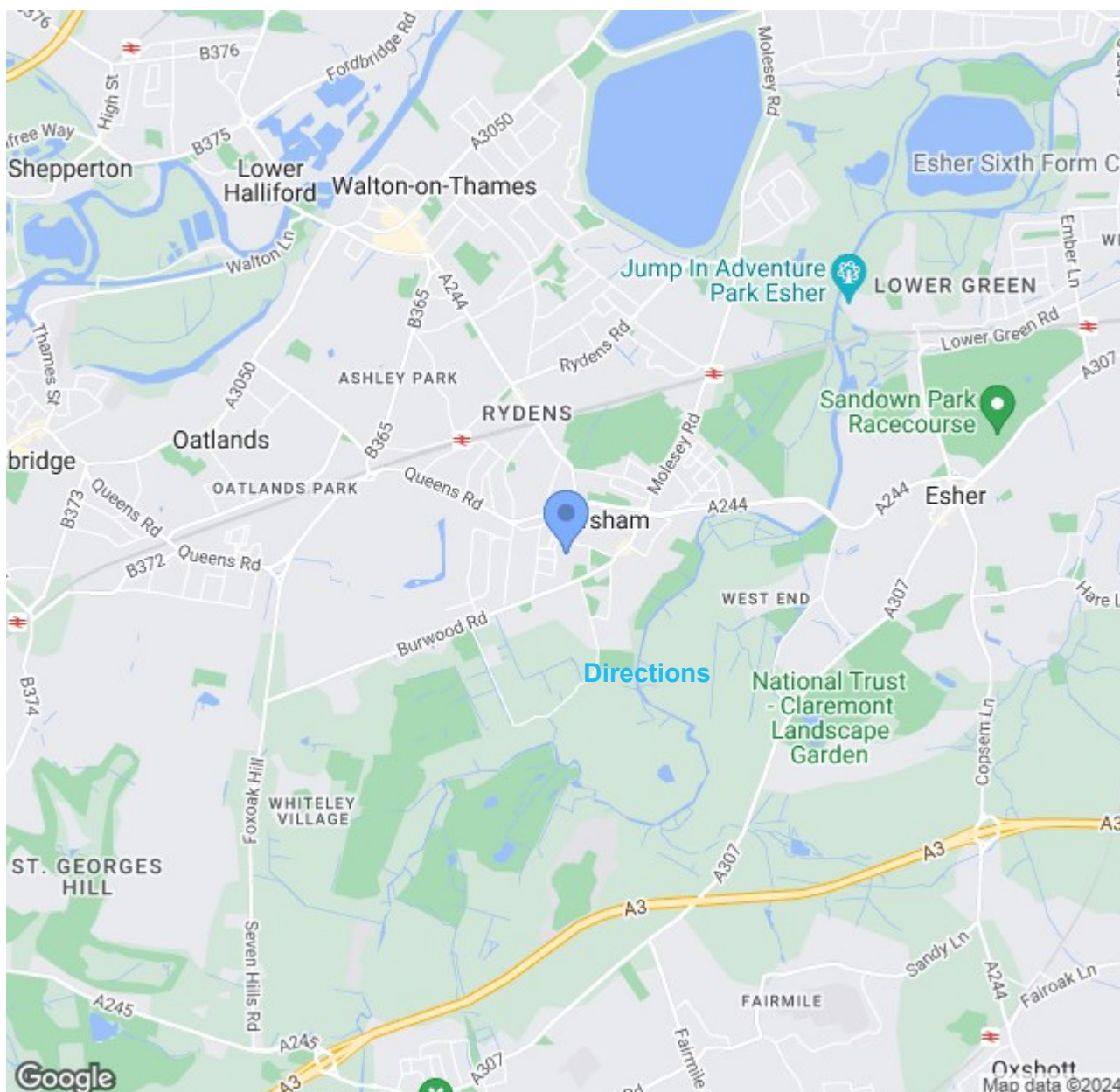
Offers Over £425,000

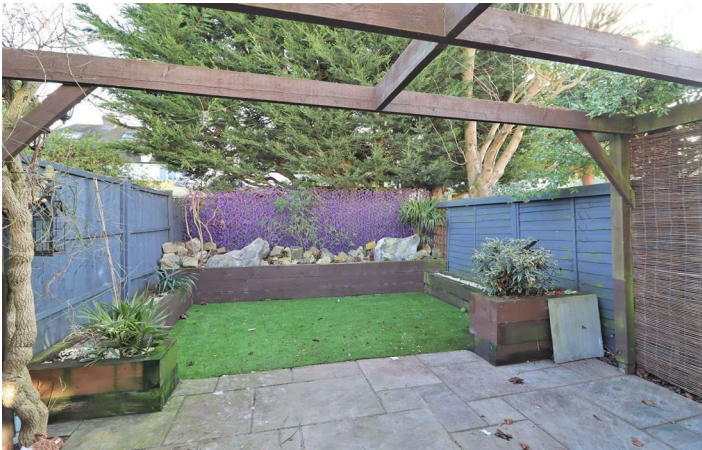
Ingrams Close

, Hersham Village, KT12 5JH

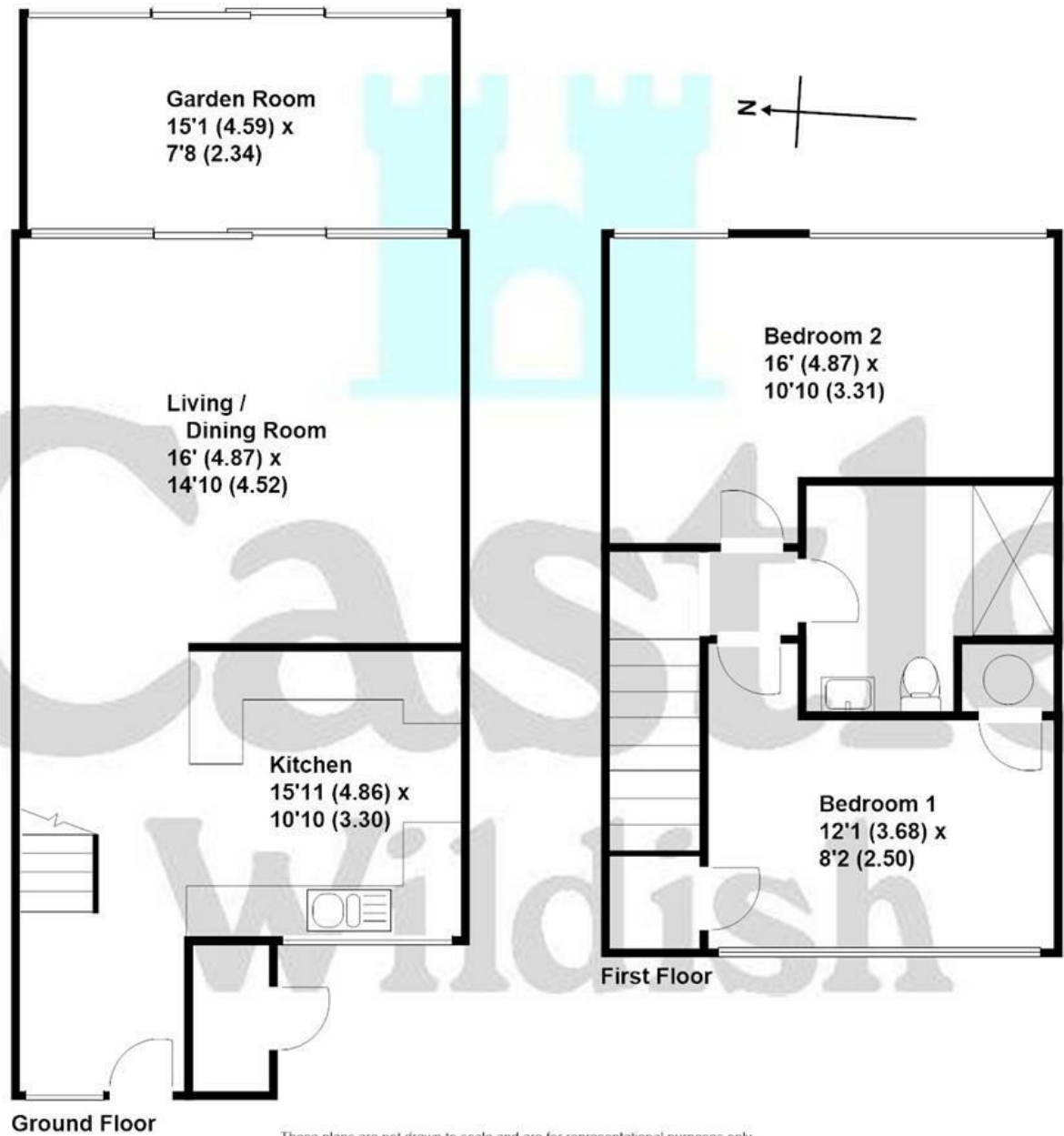


- Two Double Bedroom Home
- Quiet Cul-de-sac Location
- Easy Access To Village Centre & Walton on Thames Mainline Station
- Easy Maintenance Rear Garden
- Private Garage Opposite & Parking
- Large Open Plane Living Room
- Useful Rear Conservatory
- Modern Fitted Kitchen
- Full Gas Central Heating
- No Onward Chain!





Ingrams Close, Hersham
Approximate gross internal floor area 969 sq/ft - 90 m/sq



These plans are not drawn to scale and are for representational purposes only. The services, systems and appliances listed in these details have not been tested by Castle Wildish, and no guarantee is given to their operational ability or efficiency. Copyright Castle Wildish 2023. Created by www.visionwithin.co.uk

These particulars, whilst believed to be accurate are set out as a general outline only for guidance and do not constitute any part of an offer or contract. Intending purchasers should not rely on them as statements of representation of fact, but must satisfy themselves by inspection or otherwise as to their accuracy. No person in this firms employment has the authority to make or give any representation or warranty in respect of the property.

