

Castle Wildish



Molesey Close , Hersham Village, KT12 4PT

Castle Wildish offer this charming three/four bedroom Family Home, located in a quiet part of the Village. The property has been modified over the years and now enjoys a ground floor bedroom/study with en suite shower room. Offering good size accommodation throughout and the benefit of a west facing rear garden, with direct access from the open plan living/dining room. There is also fully integrated state of the art kitchen and modern fitted bathroom to the first floor and equally up to date shower room to the ground floor.

With easy access to good local Schools and Hersham Mainline Station only a few minutes walk away. Hersham Village Centre is also within walking distance, with its fine array of local shops, including large Waitrose & Lidl stores.

To be sold with no onward chain!

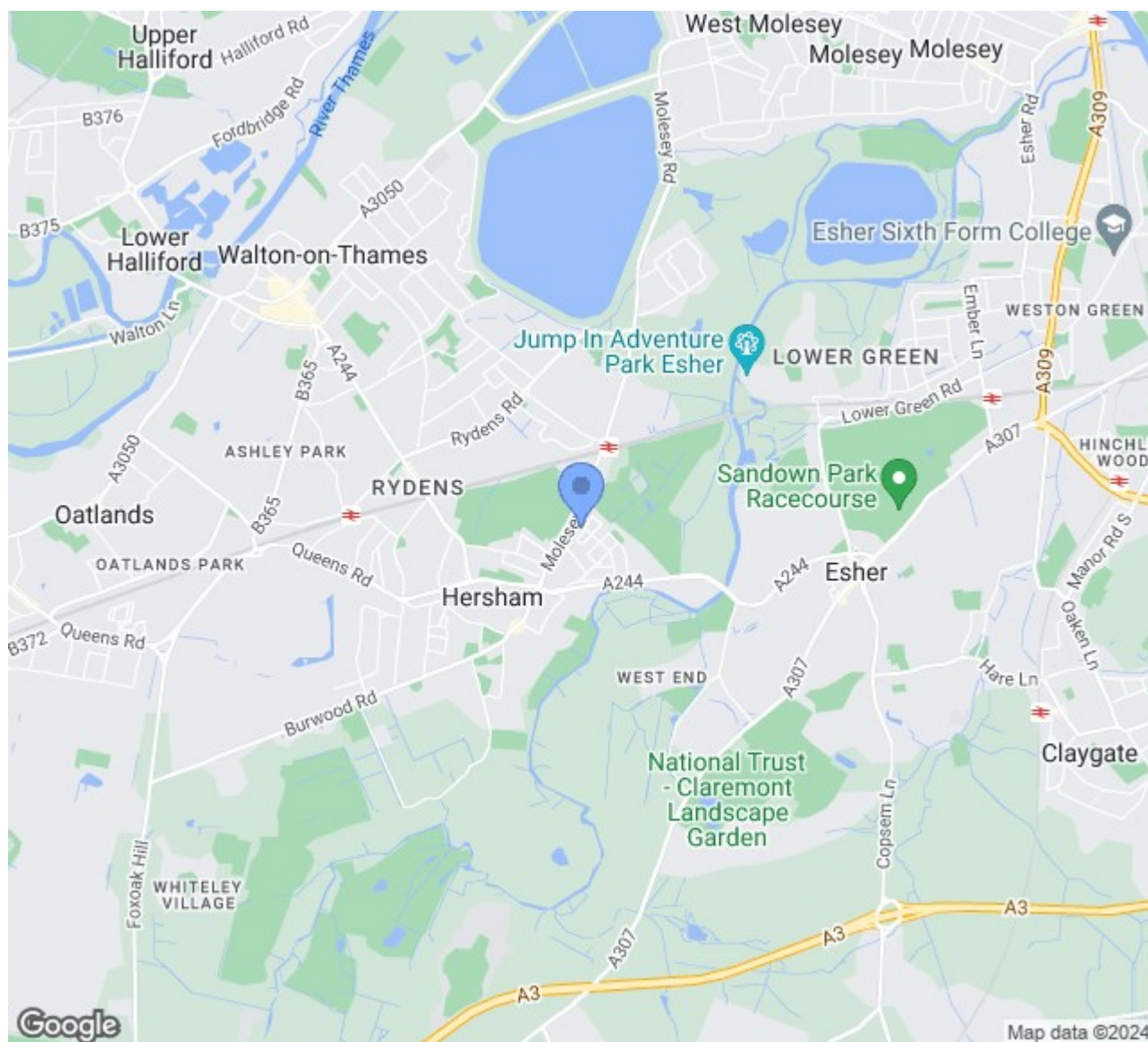
Offers Over £535,000

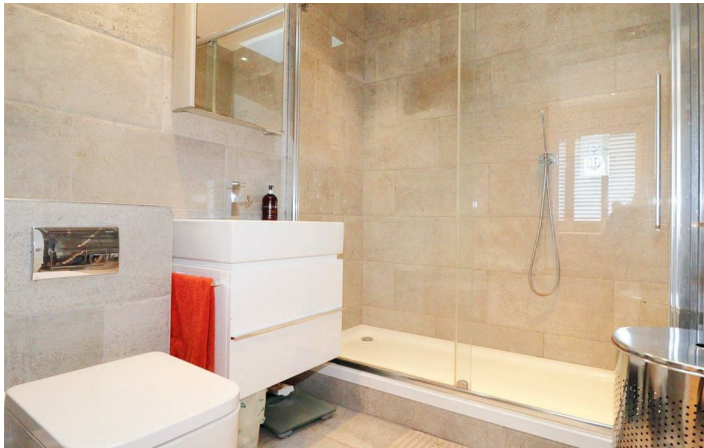
Molesey Close

, Hersham Village, KT12 4PT



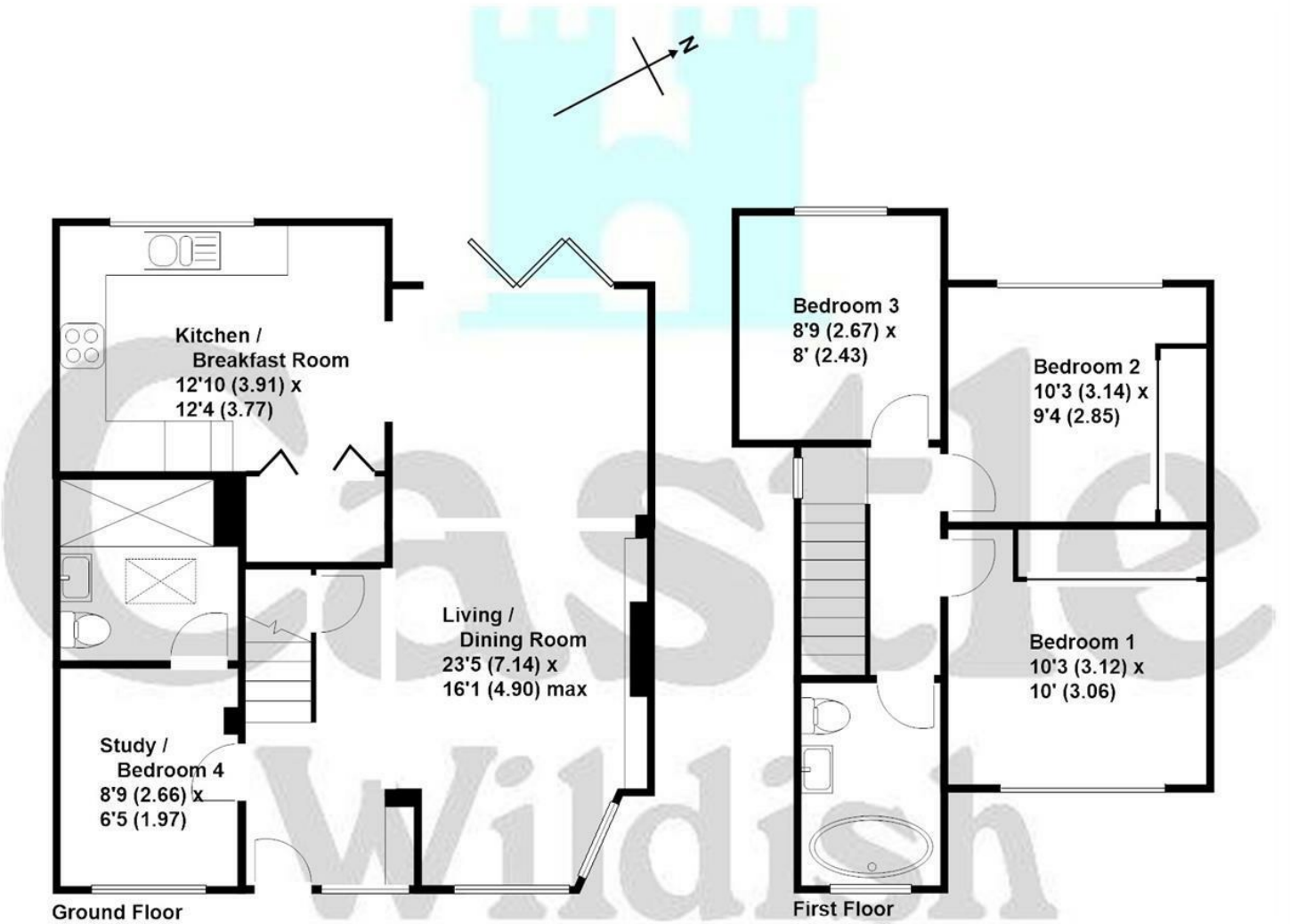
- Spacious Three Bedroom Family Home
- Large Open Plan Reception Room
- Fully Integrated Kitchen
- Ground Floor Bedroom/Study With En Suite
- West Facing Rear Garden
- Off Street Parking To Front Driveway
- Convenient Access To Hersham Mainline Station & Village Centre
- Good Catchment Area For Local Schools
- No Onward Chain!





Molesey Road, Hersham

Approximate gross internal floor area 968 sq/ft - 90 m/sq



These plans are not drawn to scale and are for representational purposes only. The services, systems and appliances listed in these details have not been tested by Castle Wildish, and no guarantee is given to their operational ability or efficiency. Copyright Castle Wildish 2023
Created by www.visionwithin.co.uk

These particulars, whilst believed to be accurate are set out as a general outline only for guidance and do not constitute any part of an offer or contract. Intending purchasers should not rely on them as statements of representation of fact, but must satisfy themselves by inspection or otherwise as to their accuracy. No person in this firms employment has the authority to make or give any representation or warranty in respect of the property.

