

Castle Wildish



Green Lane , Hersham Village, KT12 5EZ

Castle Wildish is thrilled to present this exceptional four/five bedroom property located on the desirable Green Lane in Hersham Village, KT12.

This beautiful home boasts a spacious interior, highlighted by the impressive open plan living room, dining room, day room, and kitchen. The vaulted ceiling with Velux windows and bi-fold doors flood the space with natural light and provide direct access to the west facing garden and decking area.

The flexible accommodation includes three bedrooms on the ground floor, a family bathroom, and a convenient utility room. Upstairs, you will find two additional double bedrooms and a well-appointed shower room. Outside, there is off-street parking for two cars and a shared driveway leading to the 70' west facing rear garden.

Situated in the heart of Hersham Village, residents can enjoy easy access to nearby amenities such as Walton-on-Thames Station, Hersham Station, and Weybridge Station. Families will appreciate the proximity to Burhill Primary School and other good local Schools.

Don't miss the opportunity to view this exceptional property and experience the quality and standard it has to offer. Contact us today to arrange a viewing.

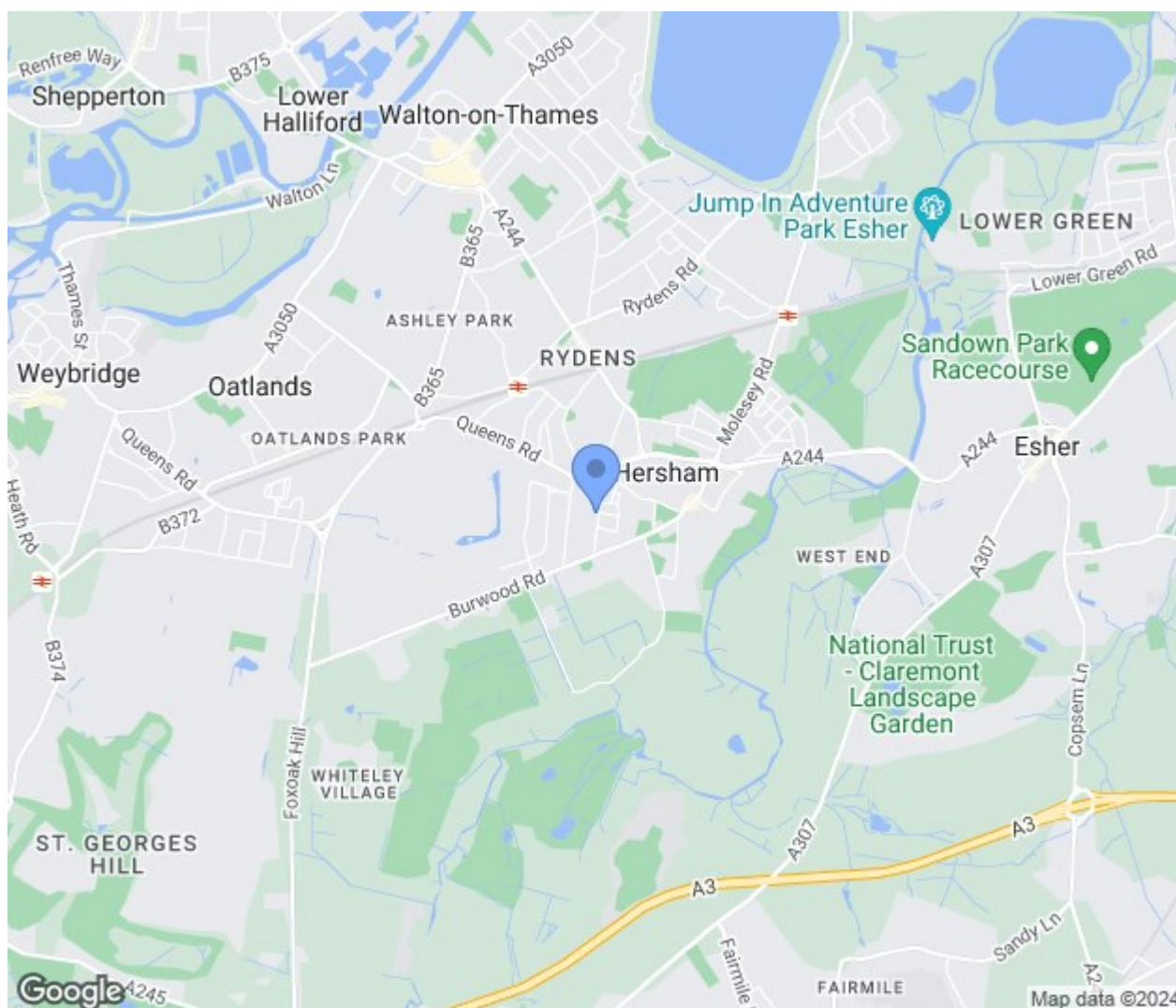
£950,000

Green Lane

, Hersham Village, KT12 5EZ



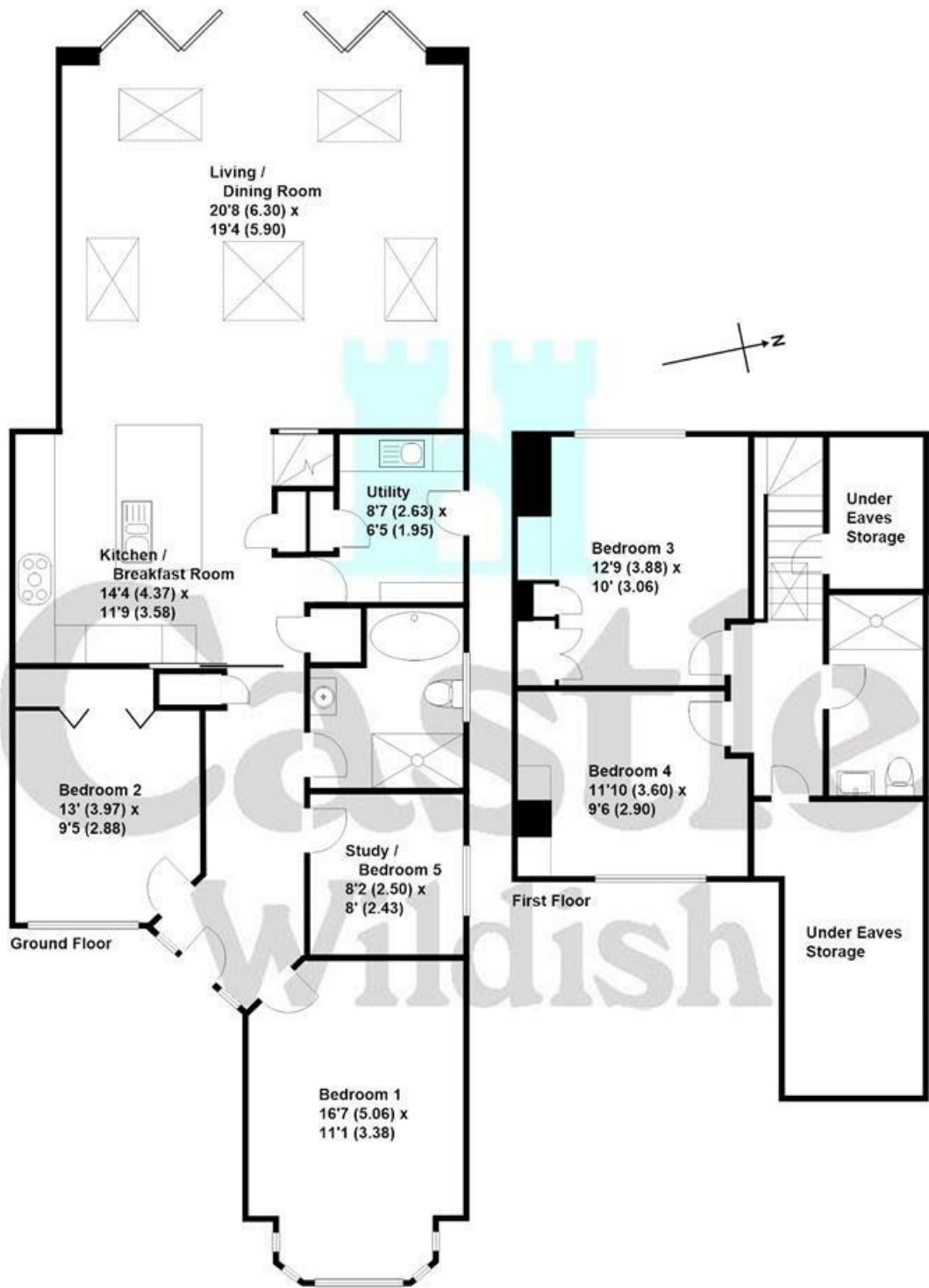
- Four/Five Good Size Bedrooms
- Two Bathrooms, Ground And First Floor
- Separate Utility Room
- West Facing Rear Garden With Large Decking Area
- Off Street Parking For At Least Two Cars
- Adaptable Accommodation Which Can Be Arranged In Many Different Ways
- Superb Open Plan & Vaulted Kitchen/Dining/Living/Day Room
- Close To Mainline Station & Village Centre





Green Lane, Hersham

Approximate gross internal floor 1584 sq/ft - 147 m/sq



These plans are not drawn to scale and are for representational purposes only. The services, systems and appliances listed in these details have not been tested by Castle Wildish, and no guarantee is given to their operational ability or efficiency. Copyright Castle Wildish 2024 Created by www.visionwithin.co.uk

These particulars, whilst believed to be accurate are set out as a general outline only for guidance and do not constitute any part of an offer or contract. Intending purchasers should not rely on them as statements of representation of fact, but must satisfy themselves by inspection or otherwise as to their accuracy. No person in this firms employment has the authority to make or give any representation or warranty in respect of the property.

