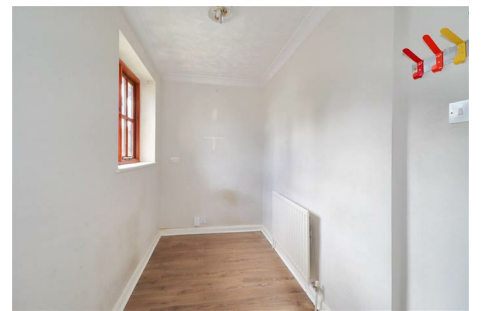


Castle Wildish



Stanley Gardens , Hersham Village, KT12 4HB

Castle Wildish is delighted to present this charming detached three-bedroom house located in the heart of Hersham Village. Situated on a generous corner plot, this property offers plenty of space and potential for those looking to put their own stamp on a home.

Although some internal refurbishment is needed, this property is attractively priced, presenting a fantastic opportunity for those with a creative vision. Spread over two floors, the house boasts a driveway and detached garage, accessed via Stanley Gardens.

Hersham Village Centre is just a short walk away, providing residents with easy access to a range of shops, including a large Waitrose and Lidl. Additionally, Walton on Thames Mainline Station is conveniently located nearby, offering direct links to London Waterloo. Families will also benefit from the close proximity to excellent local schools.

This property is a rare find in such a desirable location. Don't miss out on the chance to make this house your home. Contact us today to arrange a viewing and seize this wonderful opportunity. And remember, this property is to be sold with no onward chain!

Offers Over £675,000

Stanley Gardens

, Hersham Village, KT12 4HB



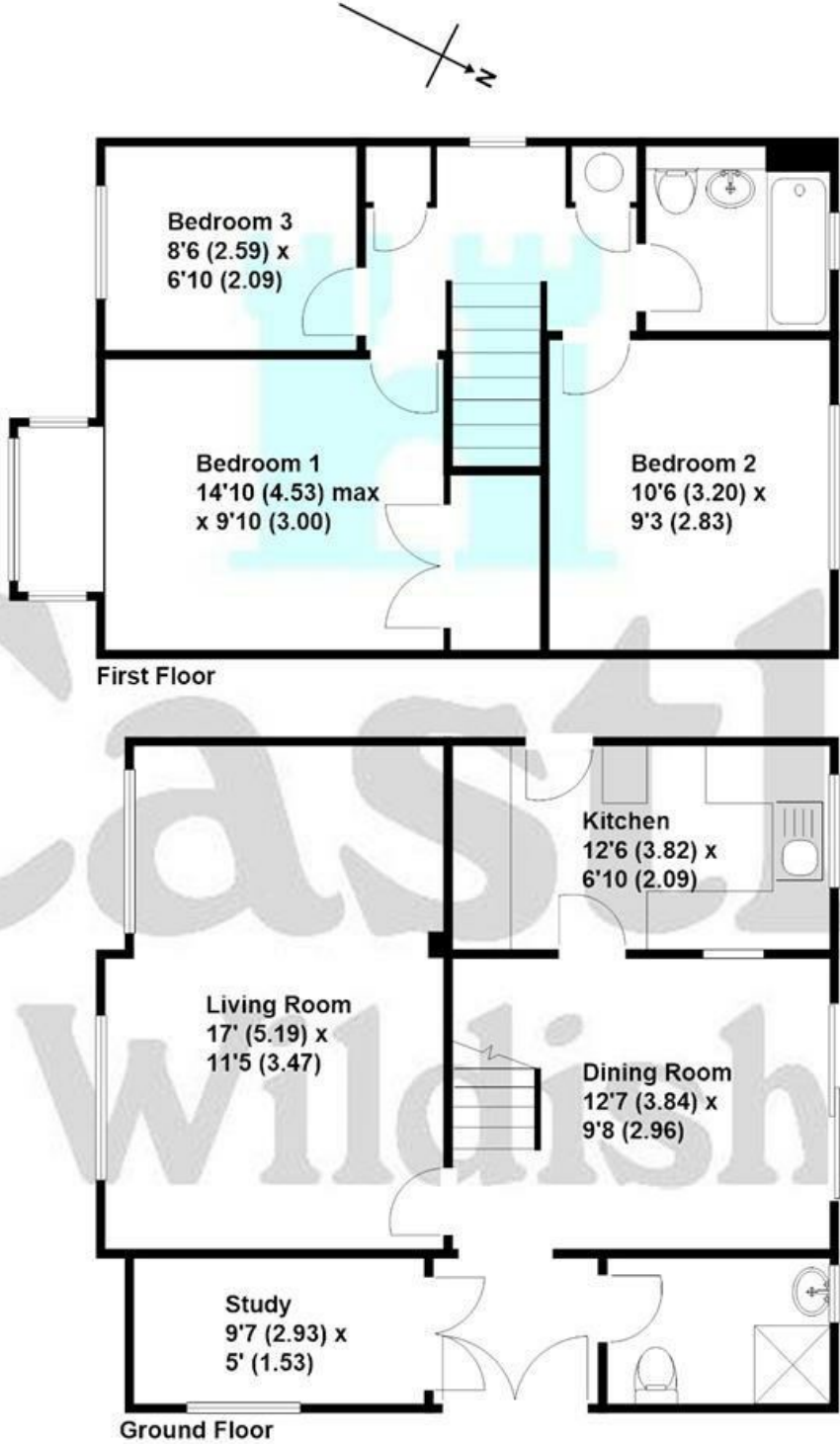
- Three Bedroom Detached House In The Heart Of the Village
- Three Reception Rooms
- Great Position For Good Local Schools
- Easy Access To Walton on Thames Mainline Station
- Ground Floor Shower Cloakroom
- To Be Sold With No Onward Chain!
- Detached Garage & Car Port, Driveway For Three Cars
- Close To Village Centre



[Directions](#)



Stanley Gardens, Hersham
Approximate gross internal floor area 973 sq/ft - 90 m/sq



These plans are not drawn to scale and are for representational purposes only. The services, systems and appliances listed in these details have not been tested by Castle Wildish, and no guarantee is given to their operational ability or efficiency. Copyright Castle Wildish 2024. Created by www.visionwithin.co.uk

These particulars, whilst believed to be accurate are set out as a general outline only for guidance and do not constitute any part of an offer or contract. Intending purchasers should not rely on them as statements of representation of fact, but must satisfy themselves by inspection or otherwise as to their accuracy. No person in this firms employment has the authority to make or give any representation or warranty in respect of the property.

