

Castle Wildish



Milton Road
Walton, KT12 3HB

A chance to acquire a charming one bedroom freehold house, located in this popular area. The property enjoys its own private rear garden, with direct access from the living room and leading to a private garage with separate parking space. Hersham Mainline Station is within easy walking distance and both Walton & Hersham Centres are within easy reach. This would make an excellent first time buy or investment property.

To be sold with no onward chain!

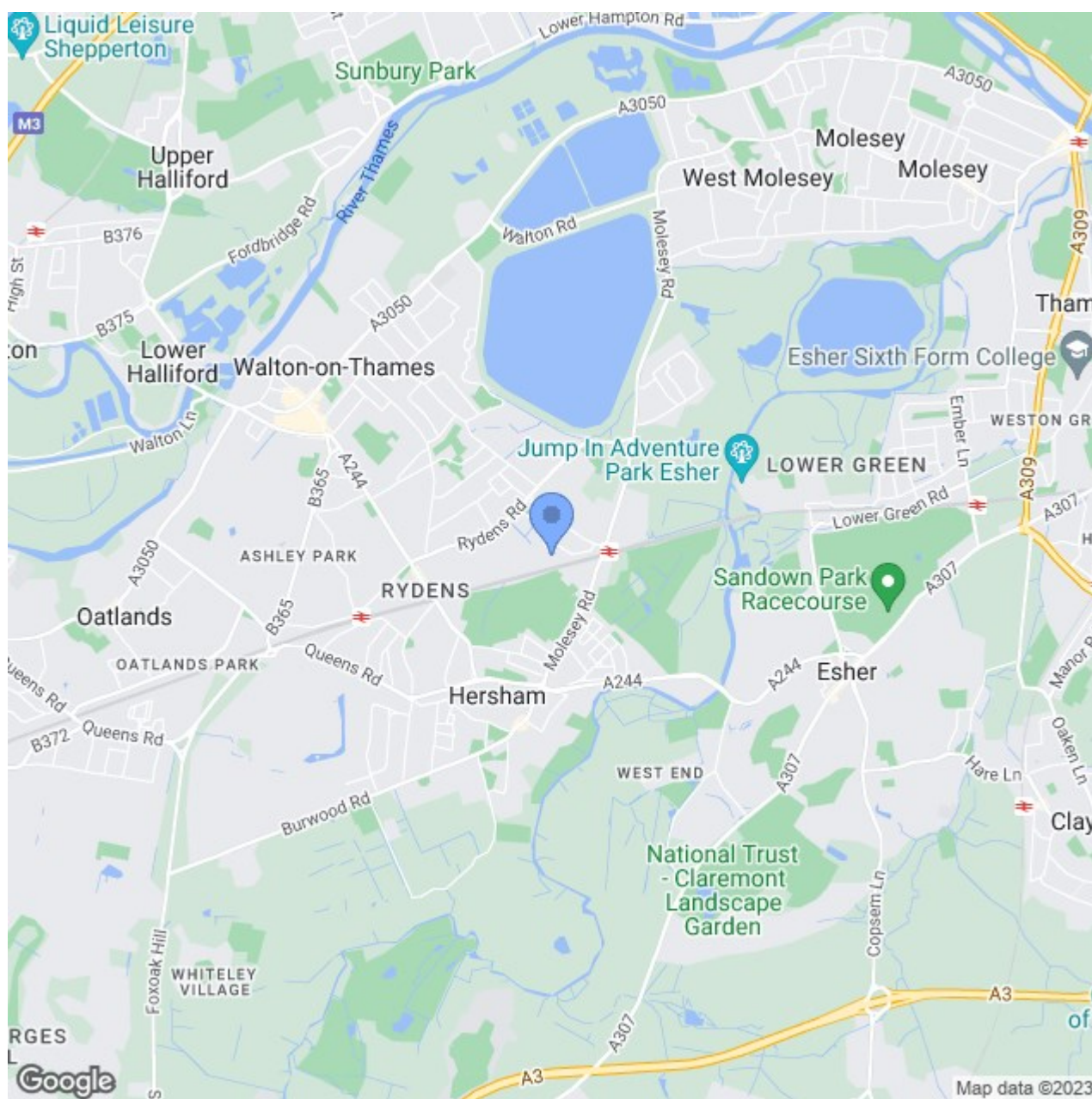
Offers Over £300,000

Milton Road

, Walton, KT12 3HB



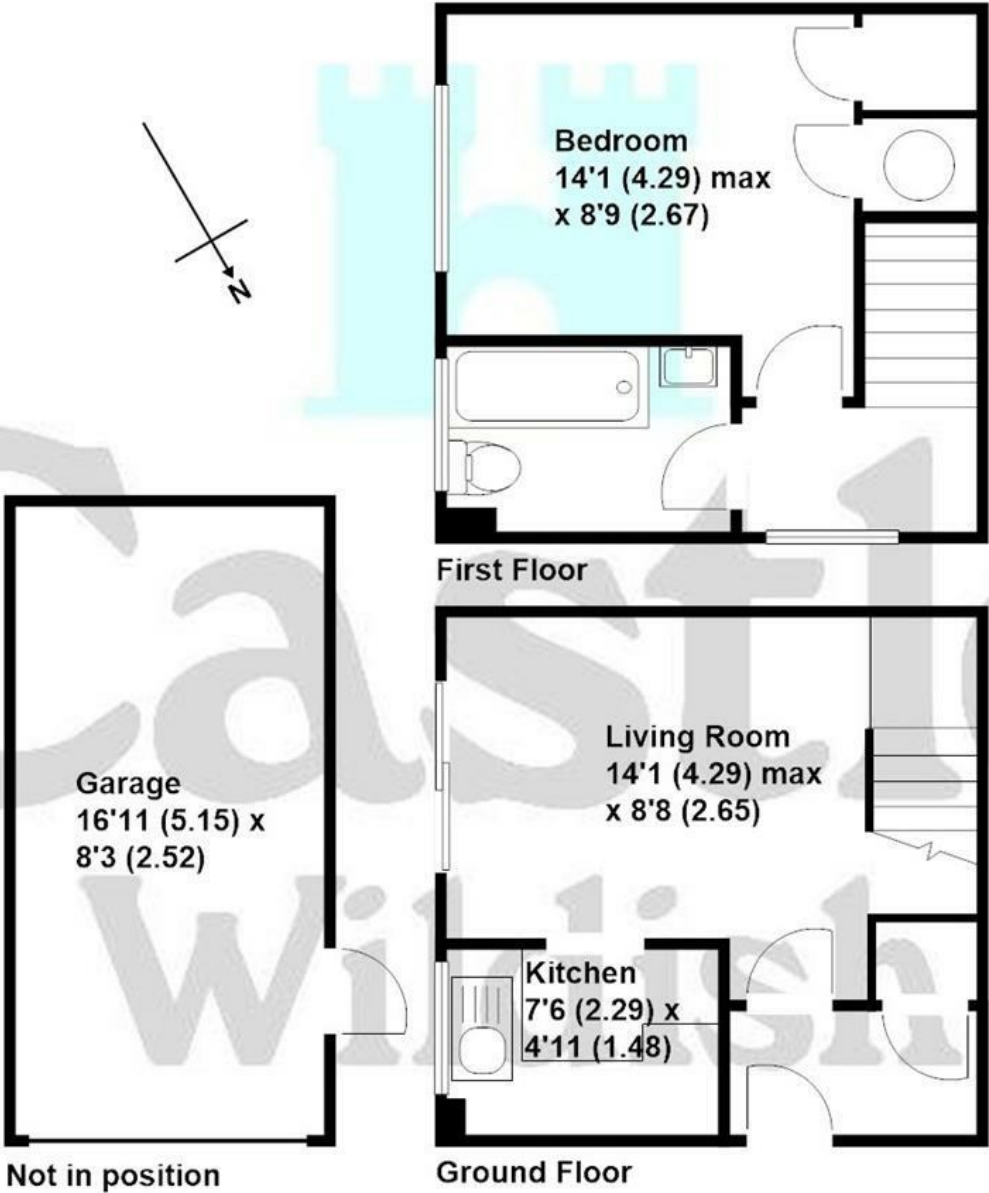
- One Bedroom Freehold House
- Private Garden, Garage & Parking Space
- Direct Access From Living Room Into Garden
- Convenient Location
- Easy Access To Hersham Mainline Station
- Gas Central Heating
- Living Room & Separate Kitchen
- To be Sold With No Onward Chain!





Milton Road, Walton-on-Thames

Approximate gross internal floor area 393 sq/ft - 36.5 m/sq



These plans are not drawn to scale and are for representational purposes only.
The services, systems and appliances listed in these details have not been tested
by Castle Wildish, and no guarantee is given to their operational ability or efficiency.
Copyright Castle Wildish 2023
Created by www.visionwithin.co.uk

These particulars, whilst believed to be accurate are set out as a general outline only for guidance and do not constitute any part of an offer or contract. Intending purchasers should not rely on them as statements of representation of fact, but must satisfy themselves by inspection or otherwise as to their accuracy. No person in this firms employment has the authority to make or give any representation or warranty in respect of the property.

