

Castle Wildish



Pleasant Place

, Hersham Village, Walton on Thames, KT12 4HX

Viewing Strictly By Appointment Saturday 13th August 2022 10am-12pm

Castle Wildish are delighted to offer this charming detached cottage, situated in a much sought after position, with easy access to the Village Centre. The property may require some cosmetic attention, although, this will only improve the value. The property occupies a mature south facing garden plot with a useful large wooden outbuilding to the rear.

Appointments to view are essential to fully appreciate this property.

Offers Over £625,000

Pleasant Place

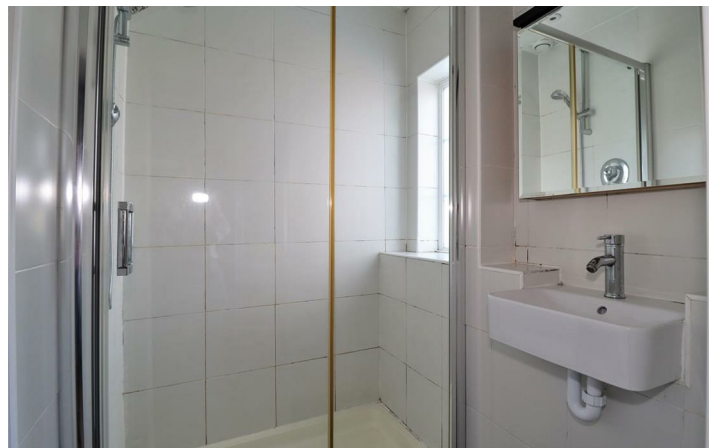
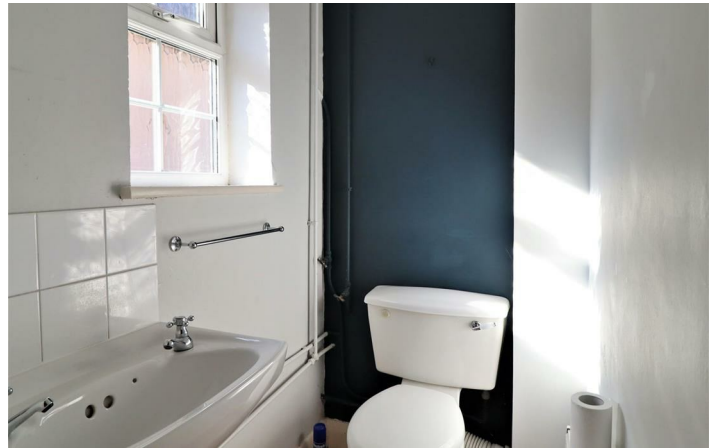
, Hersham Village, Walton on Thames, KT12 4HX



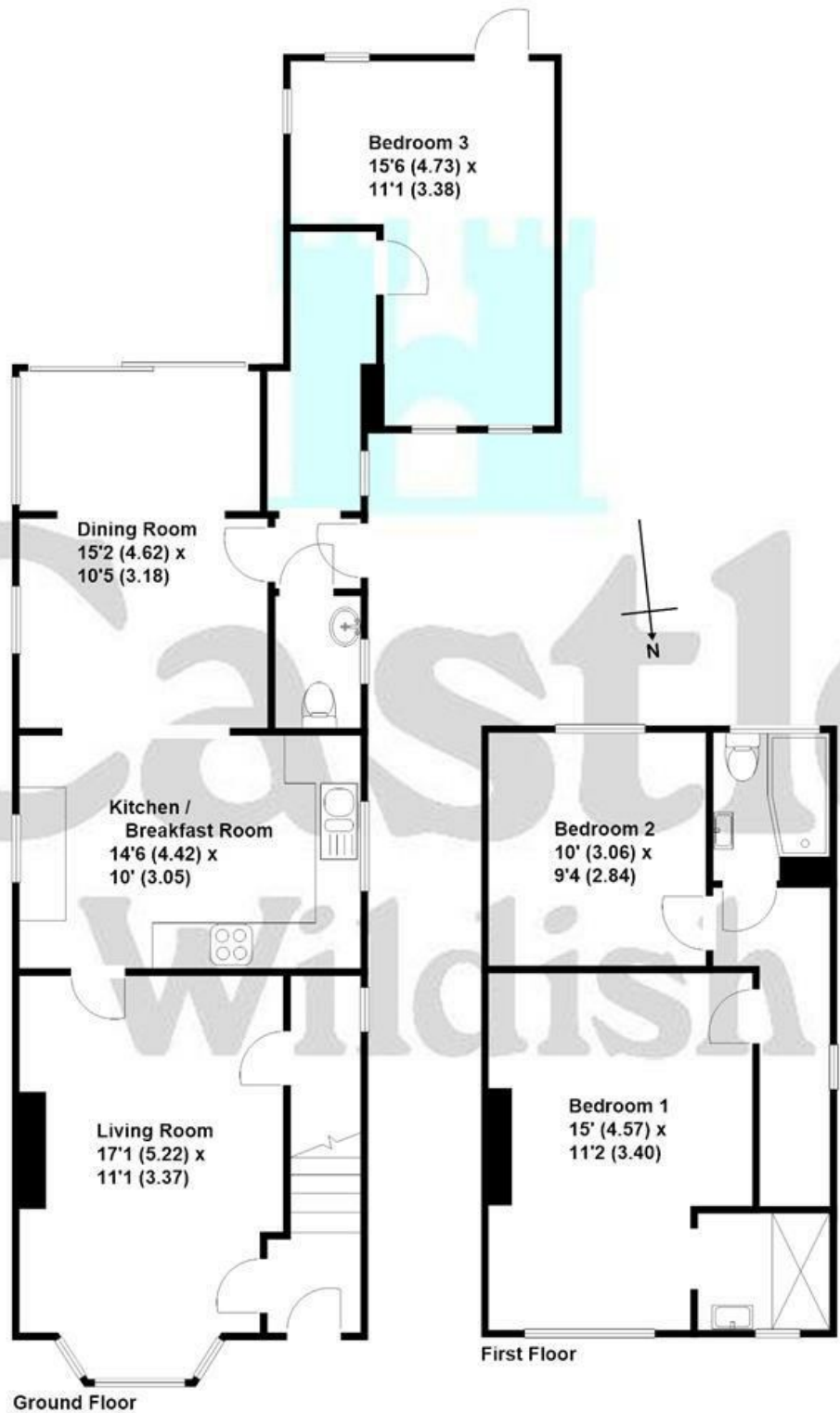
- Detached Two/Three Bedroom Home
- South Facing Rear Garden
- To Be Sold With No Onward Chain
- Delightful Location In Quiet Road
- Useful Garden Outbuilding
- Easy Access To Village Centre And Both Mainline Stations
- Scope For Some Improvements And Extension [STPP]



[Directions](#)



Pleasant Place, Hersham
Approximate gross internal floor area 1133 sq/ft - 105 m/sq



These plans are not drawn to scale and are for representational purposes only.
The services, systems and appliances listed in these details have not been tested
by Castle Wildish, and no guarantee is given to their operational ability or efficiency.
Copyright Castle Wildish 2022.
Created by www.visionwithin.co.uk

These particulars, whilst believed to be accurate are set out as a general outline only for guidance and do not constitute any part of an offer or contract. Intending purchasers should not rely on them as statements of representation of fact, but must satisfy themselves by inspection or otherwise as to their accuracy. No person in this firms employment has the authority to make or give any representation or warranty in respect of the property.

