

# Castle Wildish



## Mayfield Close , Hersham Village, KT12 5PR

Commuters dream!

This pleasant two bedroom modern neo-Georgian end of terrace property, is situated in a quiet cul-de-sac within two minutes walk of Walton on Thames Mainline Station.

The property would benefit from some minor cosmetic improvement, which would certainly enhance the price.

Features include good size living room opening into a pleasant well stocked rear garden. There is also a private garage and allocated parking space.

To be sold with no onward chain!

**Offers Over £425,000**

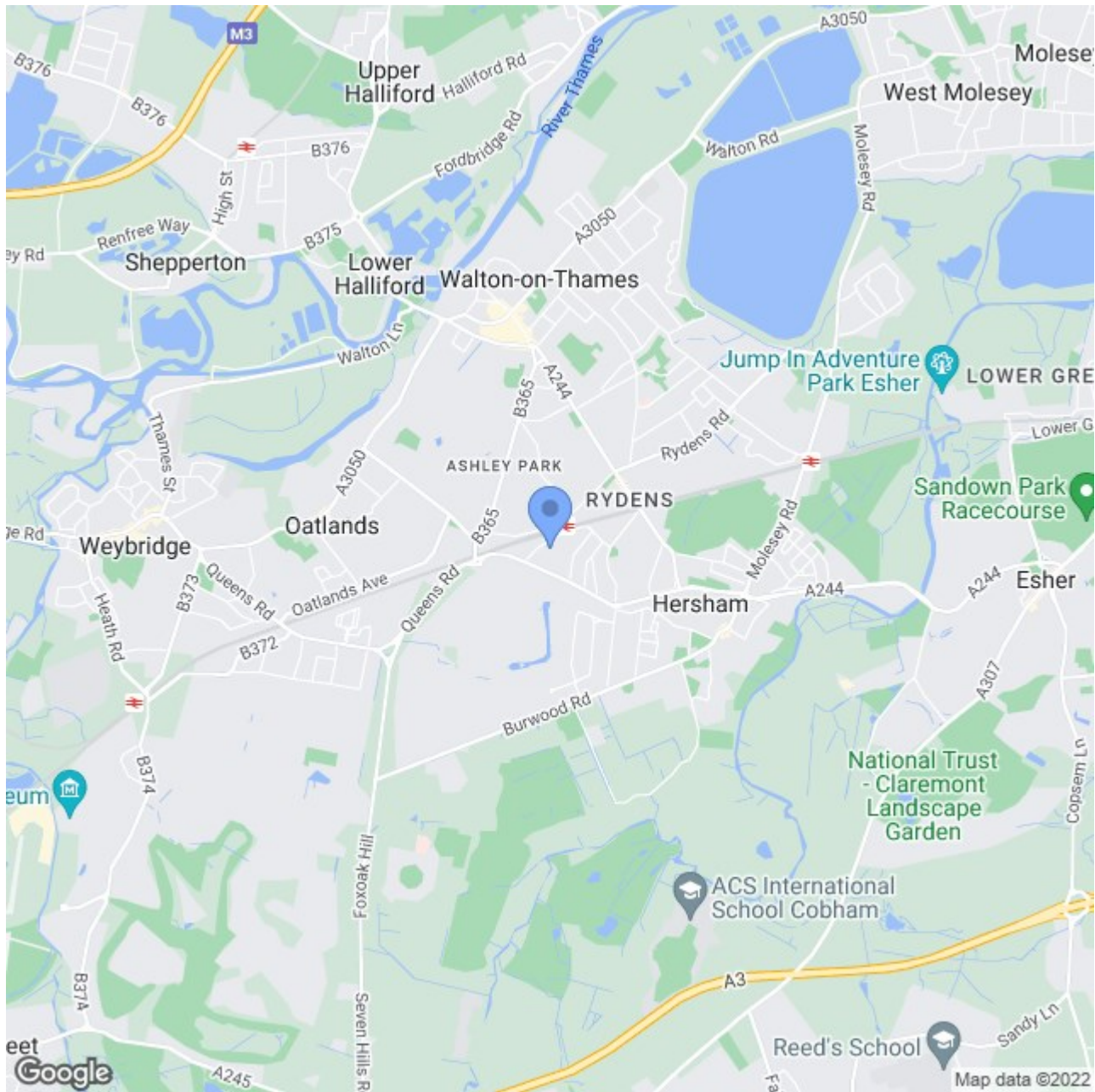


Mayfield Close  
 , Hersham Village, KT12 5PR

, Hersham Village, KT12 5PR



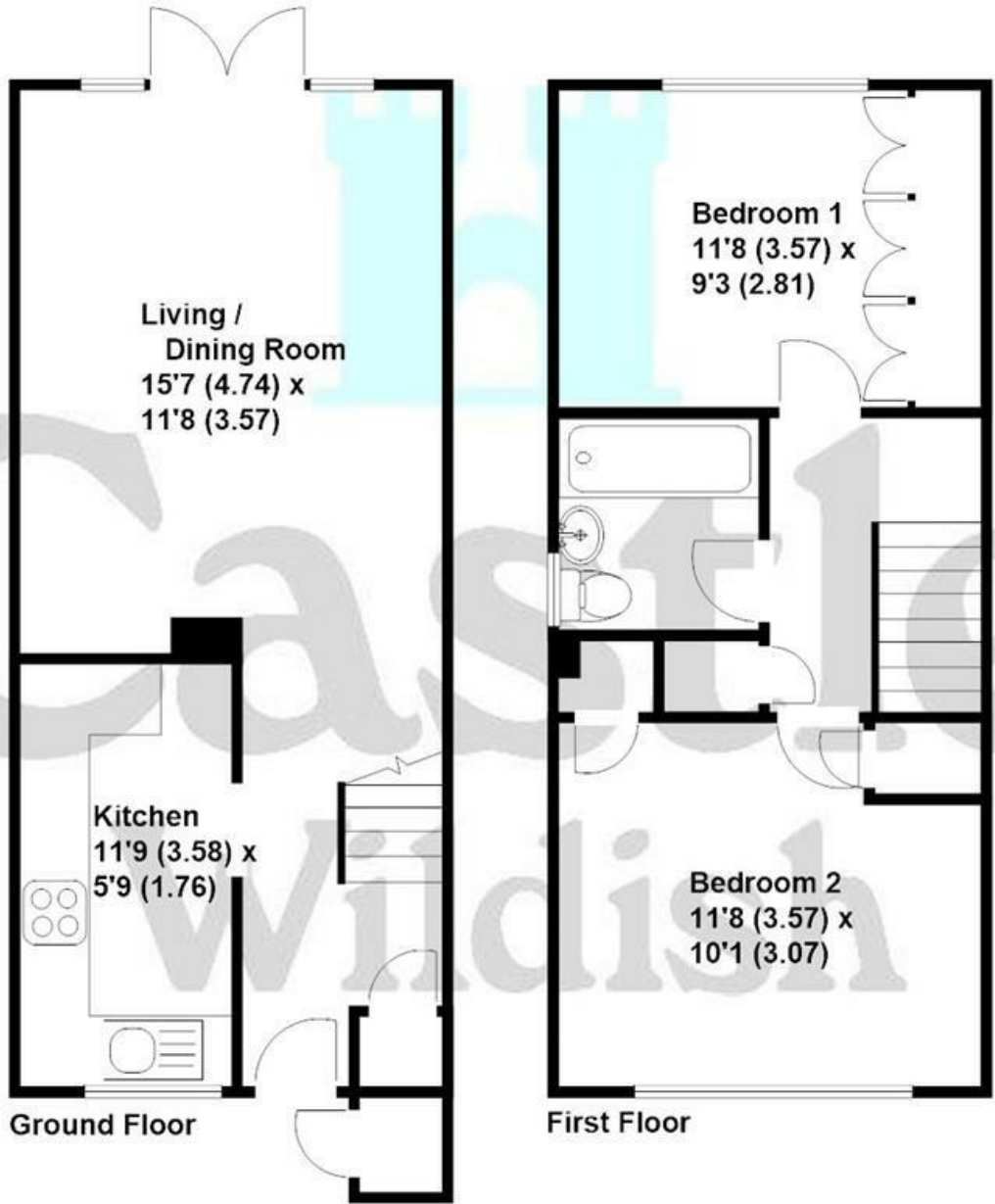
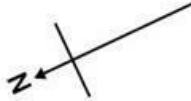
- Two Double Bedrooms
- Private Rear Garden
- Garage & Parking
- Gas Central Heating
- Close to Station
- Large Reception Room





Mayfield Close, Hersham

Approximate gross internal floor area 650 sq/ft - 60.3 m/sq



These plans are not drawn to scale and are for representational purposes only.  
The services, systems and appliances listed in these details have not been tested  
by Castle Wildish, and no guarantee is given to their operational ability or efficiency.  
Copyright Castle Wildish 2022  
Created by [www.visionwithin.co.uk](http://www.visionwithin.co.uk)

These particulars, whilst believed to be accurate are set out as a general outline only for guidance and do not constitute any part of an offer or contract. Intending purchasers should not rely on them as statements of representation of fact, but must satisfy themselves by inspection or otherwise as to their accuracy. No person in this firms employment has the authority to make or give any representation or warranty in respect of the property.

