

# Castle Wildish



**Thrapps Lane**  
**, Hersham, KT12 4NF**

\*Multiple offers have now been received and we are in the process of agreeing the sale. Unfortunately no further viewings will take place.\*

Castle Wildish are delighted to offer for the first time on the market since new, this substantial five bedroom Family Home. Occupying a secluded and established corner garden plot, with scope for extension and some modernisation, subject to the usual consents.

Situated in the heart of the Village with easy access to both Mainline Stations, Waitrose and the recently opened Lidl store.

The property retains many fine features, including original fireplaces, wood block flooring, attached garage with double doors leading through to rear car port and garden. Opportunities to view and purchase this one off property should not be missed in order to avoid certain disappointment. To be sold with no onward chain!

**Offers In Excess Of £850,000**

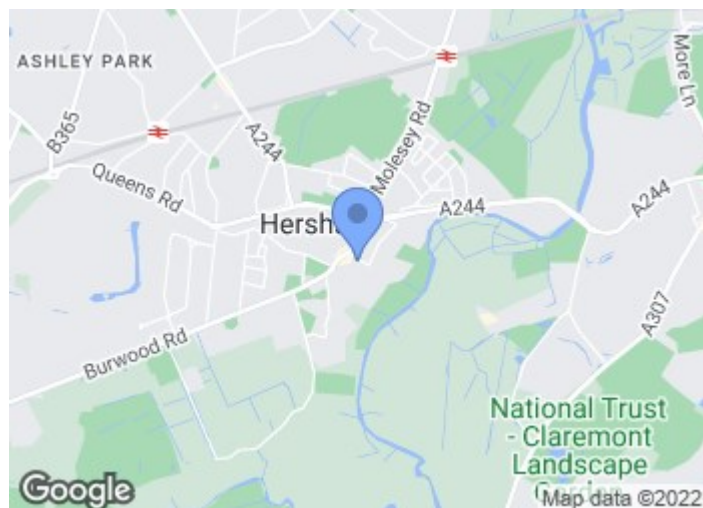
# Thrupps Lane

, Hersham, KT12 4NF



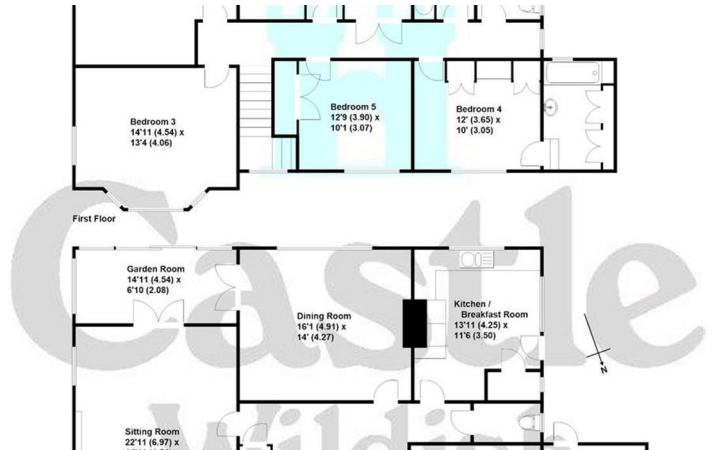
- First Time Ever On The Market
- Large Roof Space With Easy Access
- Viewings Available By Appointment  
12pm - 2pm Saturday 18th May 2019
- Substantial Five Bedroom Detached Home
- Established Garden Plot With South Facing Rear Garden
- Scope For Improvement & Modernisation
- Beautifully Constructed And Well Planned Accommodation

## Full Description



## Directions





These particulars, whilst believed to be accurate are set out as a general outline only for guidance and do not constitute any part of an offer or contract. Intending purchasers should not rely on them as statements of representation of fact, but must satisfy themselves by inspection or otherwise as to their accuracy. No person in this firms employment has the authority to make or give any representation or warranty in respect of the property.

