

# Castle Wildish



## Molesey Road , Hersham Village, KT12 4RD

Castle Wildish are delighted to present this charming three-bedroom Victorian residence, that has been beautifully maintained and updated by the present owners. One outstanding feature is the newly fitted Shaker style kitchen, with Neff integrated appliances, quartz worktops and breakfast bar.

Located in a convenient position, with easy access to both mainline Stations, good local Schools and Hersham Village Centre, including a Waitrose and Lidl stores.

The accommodation is set over two floors. There are two separate reception rooms to the ground floor, along with the refitted kitchen breakfast room, leading to a utility room and ground floor cloakroom. The first floor offers three good size bedrooms and a modern fitted family bathroom. The master bedroom enjoys a full complement of handmade floor to ceiling built in wardrobes.

Outside, the front garden is block paved with off street parking. The block paved driveway forms a pathway to the side located front door and gate giving access to the 70' established rear garden. A large decking area leads into the main lawn area, where a large wooden outbuilding/home office can be found at the far end of the garden.

**Offers Over £595,000**

# Molesey Road

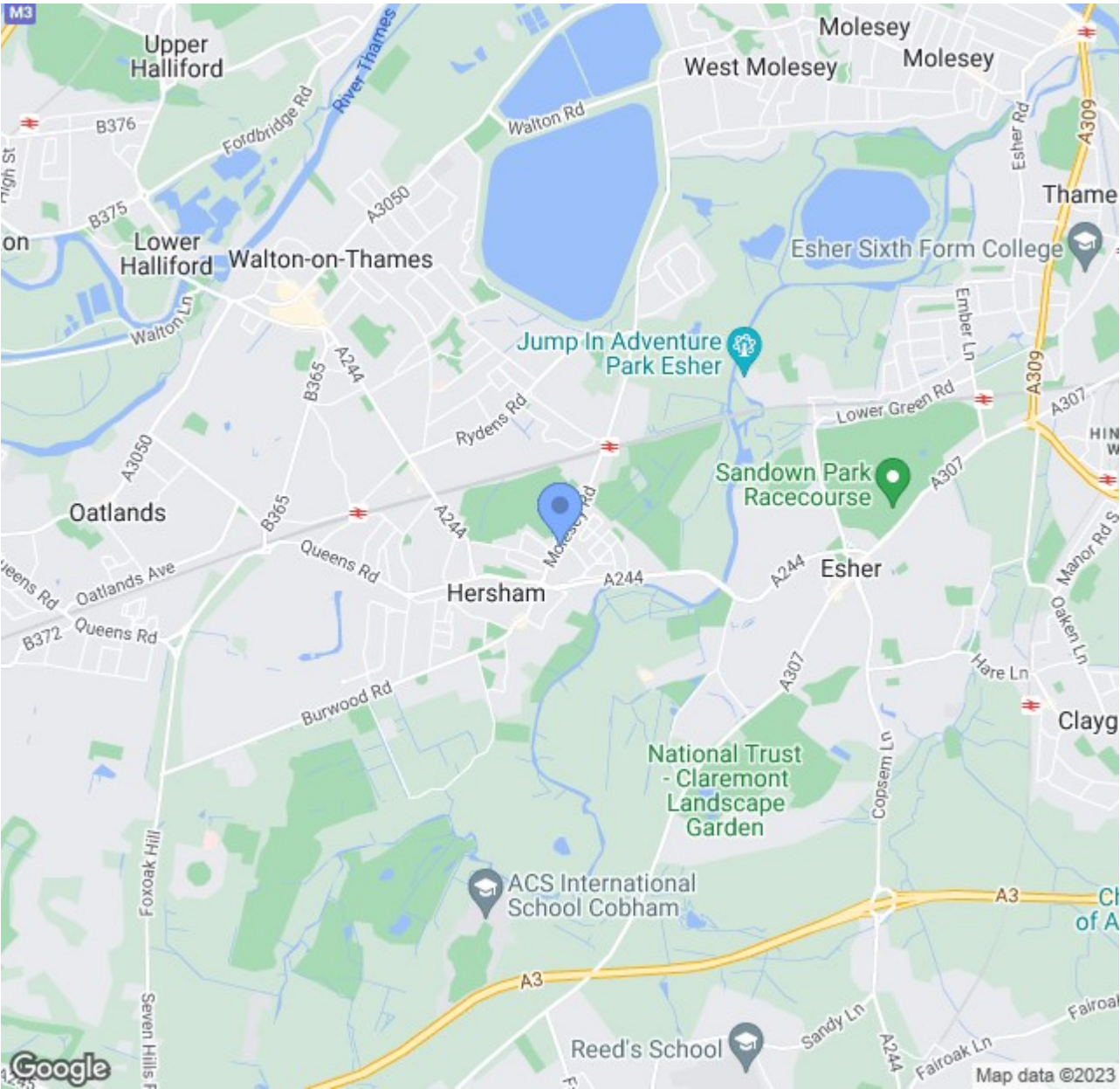
, Hersham Village, KT12 4RD

 3

 1

 2

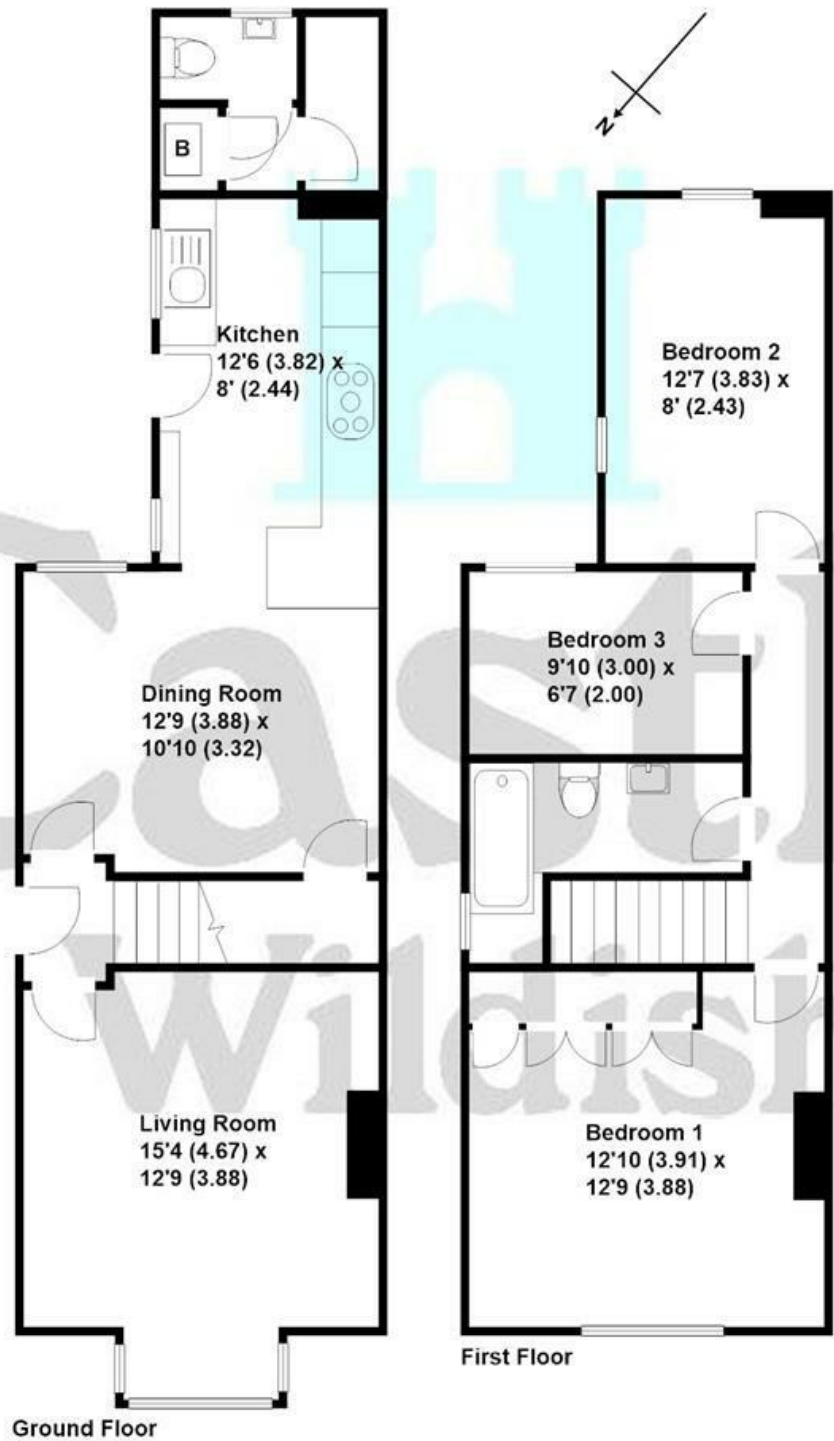
 D





Molesey Road, Hersham

Approximate gross internal floor area 977 sq/ft - 90.8 m/sq



These plans are not drawn to scale and are for representational purposes only.  
The services, systems and appliances listed in these details have not been tested  
by Castle Wildish, and no guarantee is given to their operational ability or efficiency.  
Copyright Castle Wildish 2022  
Created by www.visionwithin.co.uk

These particulars, whilst believed to be accurate are set out as a general outline only for guidance and do not constitute any part of an offer or contract. Intending purchasers should not rely on them as statements of representation of fact, but must satisfy themselves by inspection or otherwise as to their accuracy. No person in this firms employment has the authority to make or give any representation or warranty in respect of the property.

