

Castle Wildish



Eastwick Road

, Eastwick Road, KT12 5AR

Castle Wildish are delighted to offer this substantial detached residence which comes to the market for the first time. The property occupies a generous 0.28 acre plot, with a particularly wide frontage. Situated in the much sought after Eastwick Road area, which forms part of the Burwood Park Estate. The property offers tremendous scope for either development or a large extension [STPP].

To be sold with no onward chain!

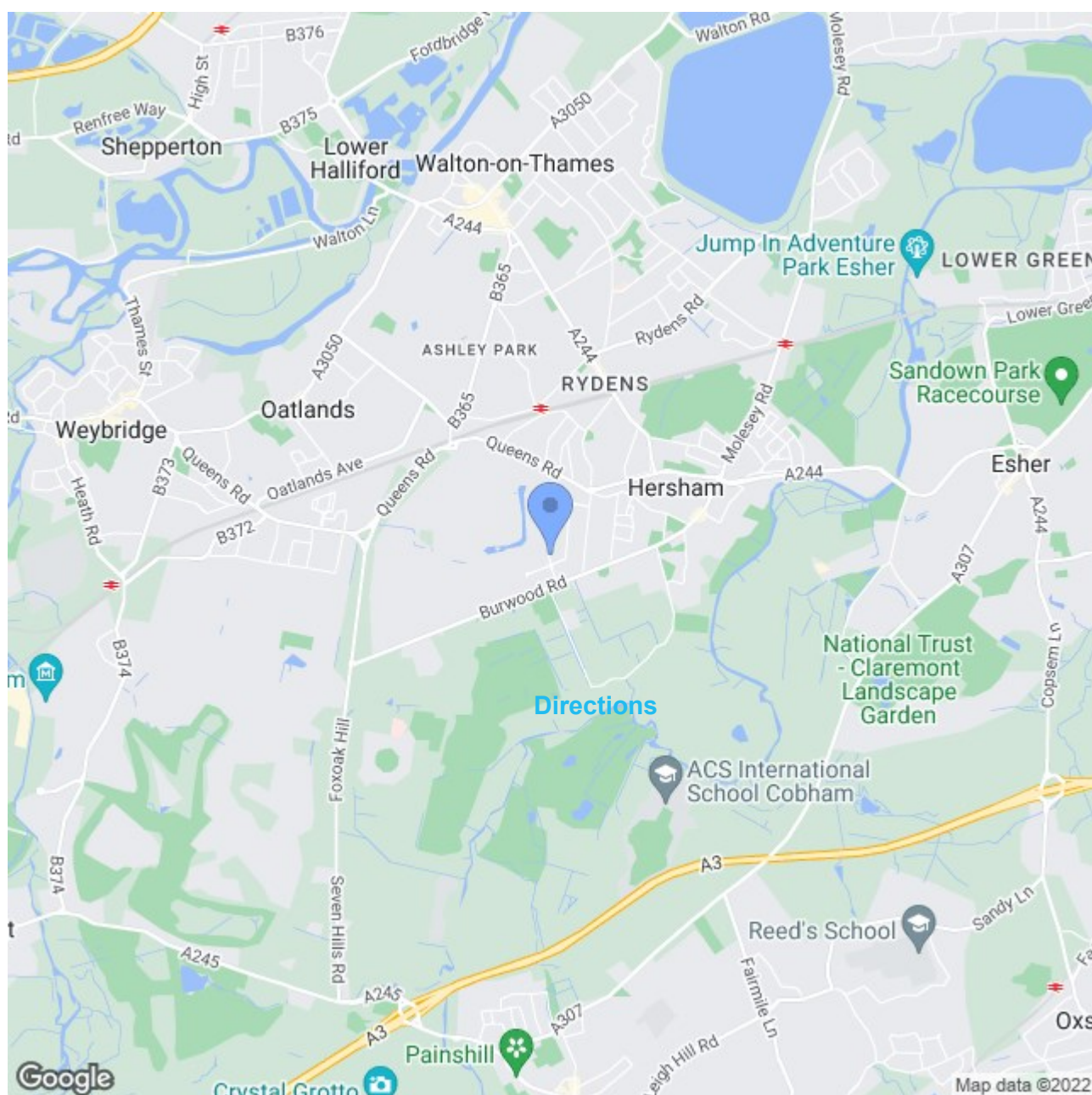
Offers Over £1,375,000

Eastwick Road

, Eastwick Road, KT12 5AR



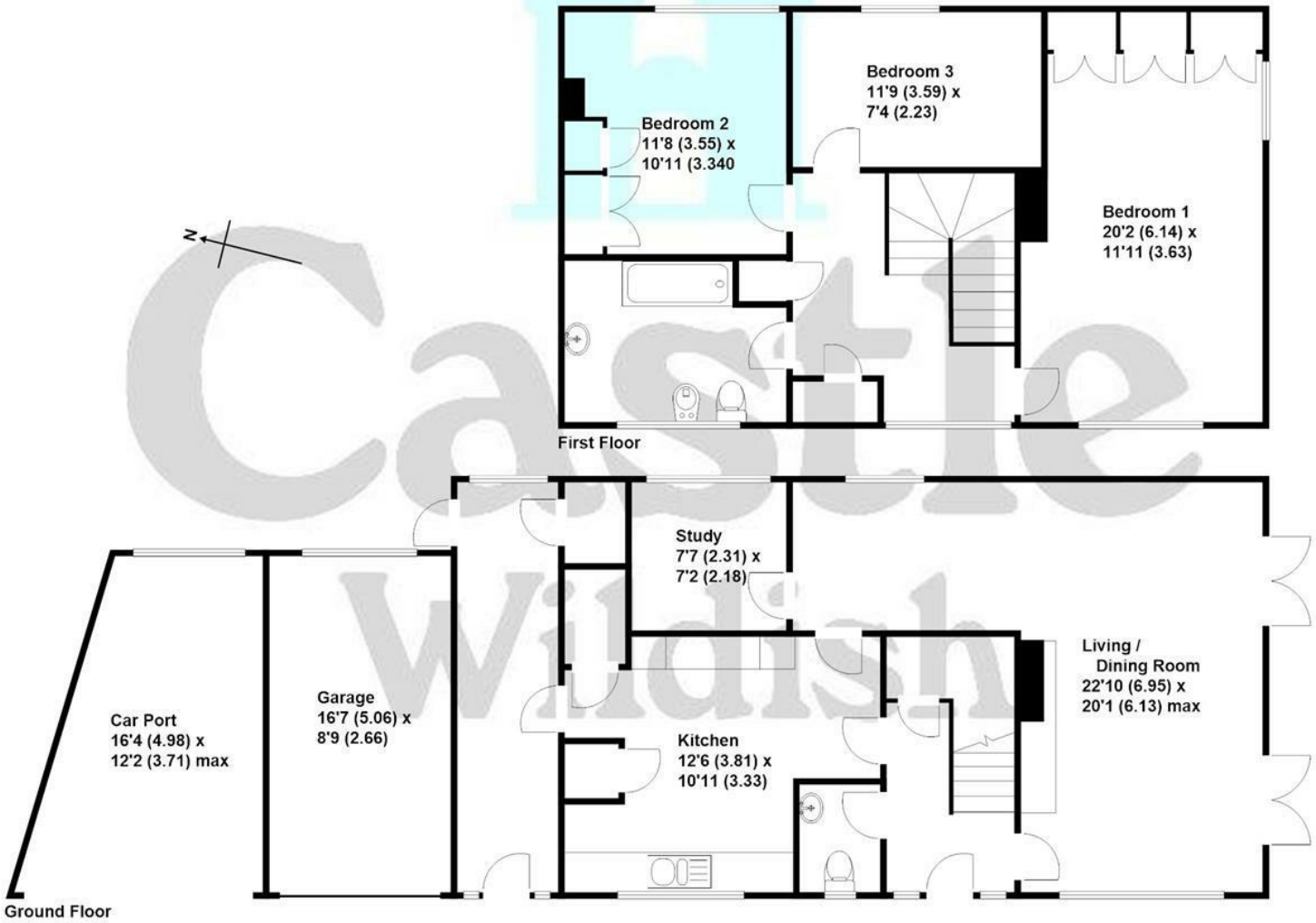
- Occupying A Mature 0.28 Acre Garden Plot
- Detached Three Bedroom Residence
- Large Frontage With Scope For Extension Or Development [STPP]
- Sought After Location Close To All Amenities
- Easy Access To Mainline Station
- Delightful Secluded Rear Garden
- To Be Sold With No Onward Chain!





Eastwick Road, Hersham

Approximate gross internal floor area 1483 sq/ft - 137.8 m/sq



These plans are not drawn to scale and are for representational purposes only. The services, systems and appliances listed in these details have not been tested by Castle Wildish, and no guarantee is given to their operational ability or efficiency. Copyright Castle Wildish 2022. Created by www.visionwithin.co.uk

These particulars, whilst believed to be accurate are set out as a general outline only for guidance and do not constitute any part of an offer or contract. Intending purchasers should not rely on them as statements of representation of fact, but must satisfy themselves by inspection or otherwise as to their accuracy. No person in this firm's employment has the authority to make or give any representation or warranty in respect of the property.

