

Castle Wildish



Mayfield Close

, Hersham Village, Walton on Thames, KT12 5PR

Castle Wildish is proud to present this spacious two-bedroom end of terrace house in the sought-after Mayfield Close, Hersham KT12. This property is a commuter's dream, being just a stone's throw away from Walton-on-Thames Station.

This home has been cleverly extended on the ground floor, offering two additional reception rooms, a utility area, and a ground floor shower room. The property boasts a three-car private driveway, a lovely west-facing rear garden with a patio, and the potential to create a separate self-contained annex if desired.

In addition to its convenient location for commuters, this property is also close to reputable schools such as Cleves School, Walton Leigh School, and Three Rivers Academy. With easy access to nearby amenities and transport links, this home is perfect for those looking for a comfortable and well-connected lifestyle.

Don't miss out on the opportunity to view this fantastic property in person. Contact us today to arrange a viewing and make this house your new home.

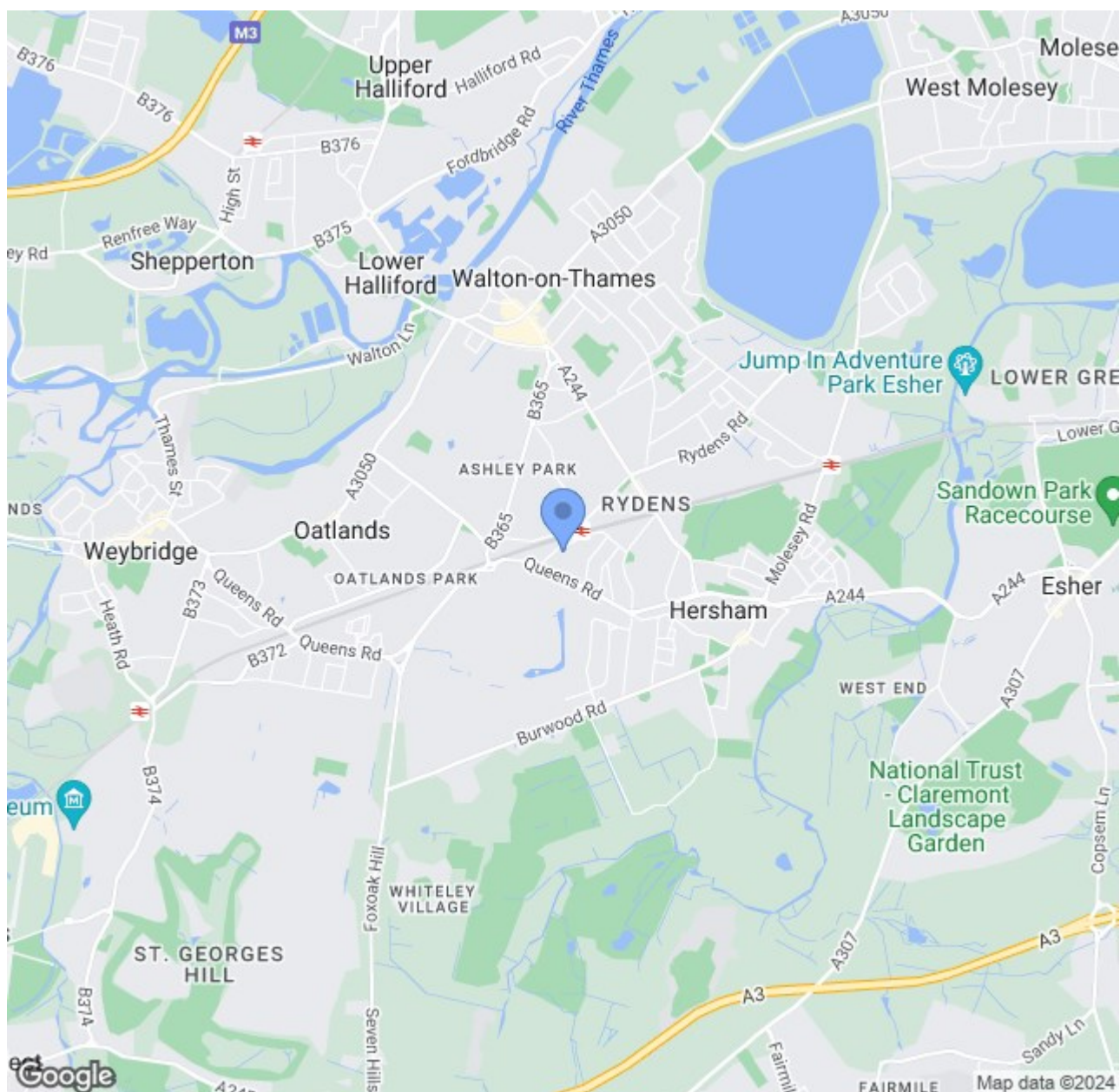
£575,000

Mayfield Close

, Hersham Village, Walton on Thames, KT12 5PR



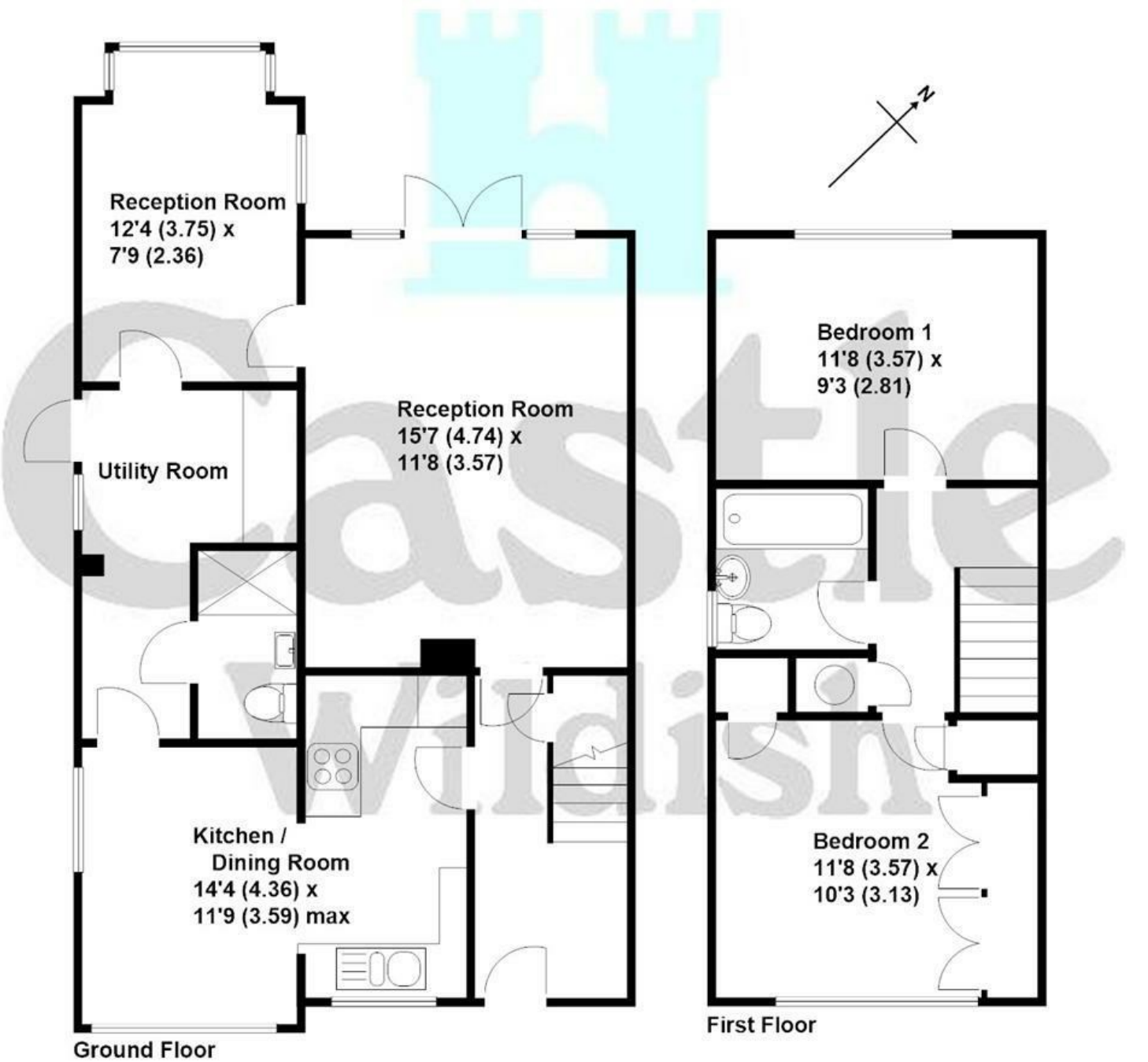
- Larger Than Usual 2/3 Bedroom Home
- Utility Area & Ground Floor Shower/Cloakroom
- Delightful 60' West Facing Rear Garden
- Great Location Close To Walton on Thames Mainline Station
- Fully Fitted Kitchen Open To Dining Room
- Potential To Create Self Contained Annexe
- Extended Ground Floor Accommodation
- Private Driveway For Three Cars
- Quiet Cul-De Sac Position





Mayfield Close, Hersham

Approximate gross internal floor area 937 sq/ft - 87 m/sq



These plans are not drawn to scale and are for representational purposes only. The services, systems and appliances listed in these details have not been tested by Castle Wildish, and no guarantee is given to their operational ability or efficiency. Copyright Castle Wildish 2024. Created by www.visionwithin.co.uk

These particulars, whilst believed to be accurate are set out as a general outline only for guidance and do not constitute any part of an offer or contract. Intending purchasers should not rely on them as statements of representation of fact, but must satisfy themselves by inspection or otherwise as to their accuracy. No person in this firms employment has the authority to make or give any representation or warranty in respect of the property.

