

Castle Wildish



Rydens Road , Walton, KT12 3AL

Castle Wildish offer this character detached property in the popular Rydens Road area.

The property requires complete modernisation throughout, in order to restore the house to its former glory. The property comprises four bedrooms and two bathrooms to the first floor and the ground floor offers two very good size reception room, both with feature fireplaces, rear conservatory, Kitchen breakfast room, with adjoining utility room. There was a recent modification to a further ground floor reception room, which is now a disability bathroom.

The mature front garden offers ample off-street parking for several cars, which could be made into an in-out driveway. [subject to usual permissions] The rear garden is 50 feet long, enjoying some established shrubs and trees.

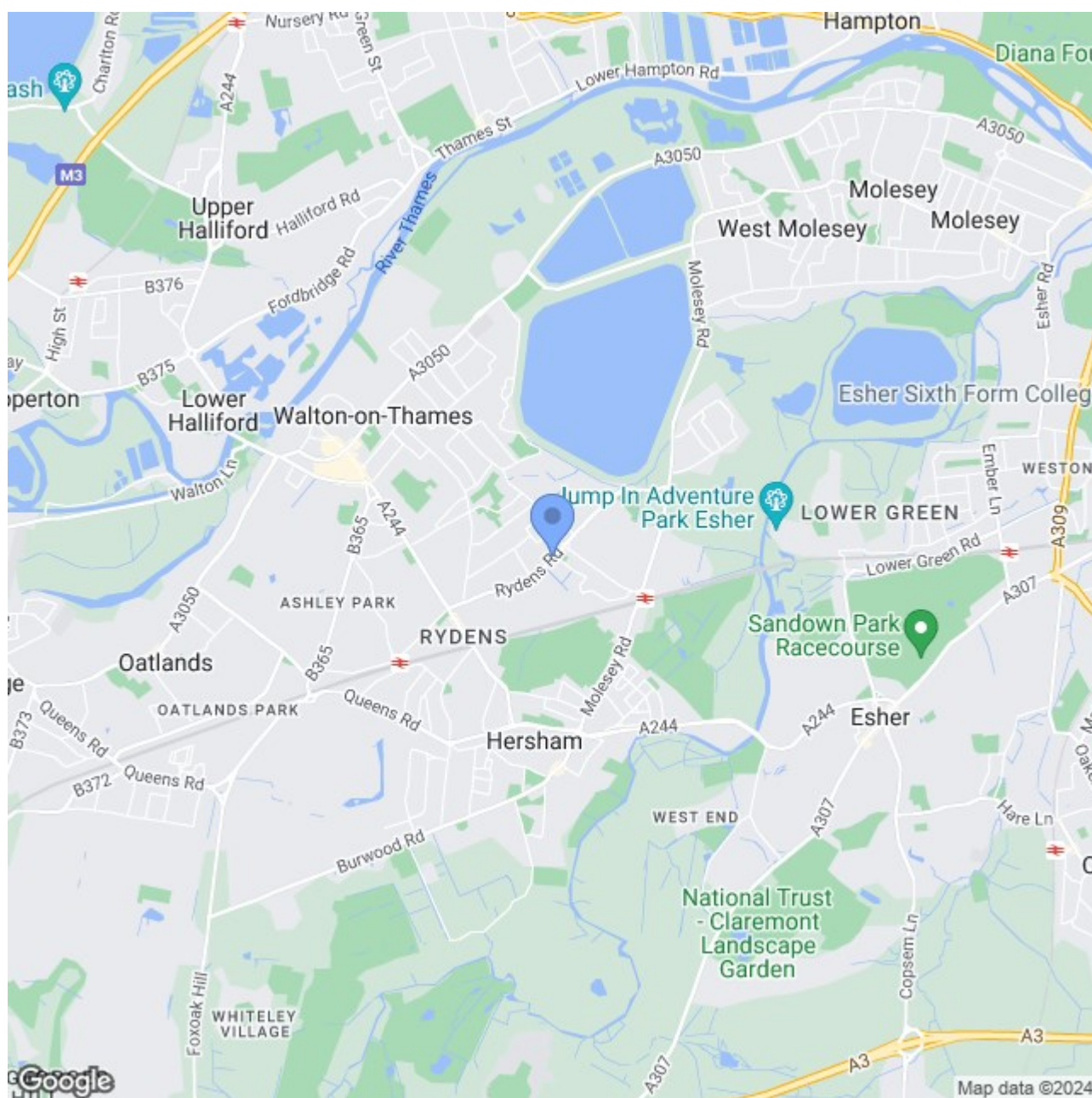
To be sold with no onward chain!
Offers Over £850,000

Rydens Road

, Walton, KT12 3AL

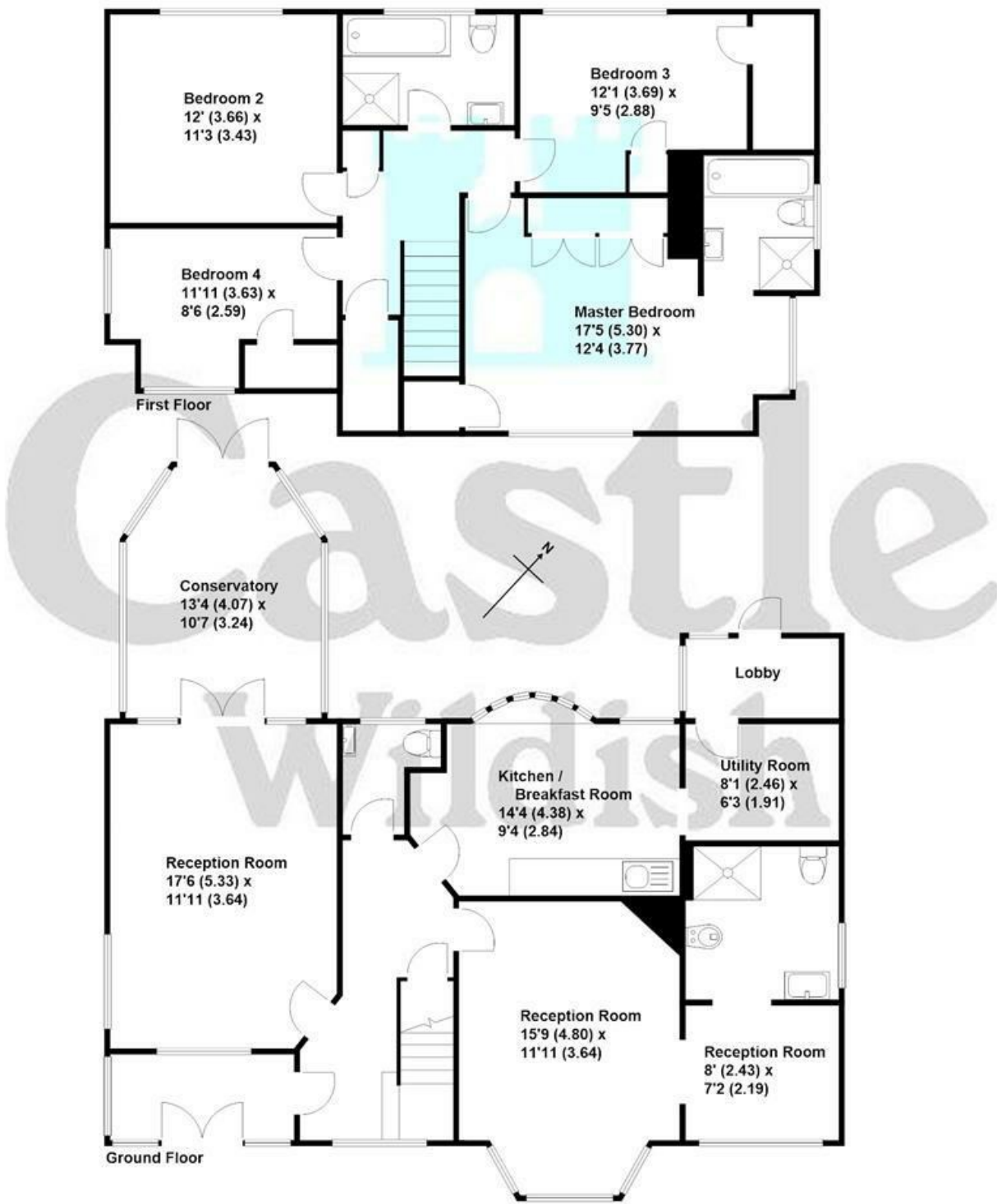


- Substantial Four Bedroom Detached Home
- Easy Access To Both Mainline Stations
- Many Character Features Including Fireplaces
- Mature Front & Rear Gardens
- Requiring Complete Modernisation
- To Be Sold With No Onward Chain!





Rydens Road, Walton-on-Thames
Approximate gross internal floor area 1900 sq/ft - 176.6 m/sq



These plans are not drawn to scale and are for representational purposes only.
The services, systems and appliances listed in these details have not been tested
by Castle Wildish, and no guarantee is given to their operational ability or efficiency.
Copyright Castle Wildish 2023.
Created by www.visorwithin.co.uk

These particulars, whilst believed to be accurate are set out as a general outline only for guidance and do not constitute any part of an offer or contract. Intending purchasers should not rely on them as statements of representation of fact, but must satisfy themselves by inspection or otherwise as to their accuracy. No person in this firms employment has the authority to make or give any representation or warranty in respect of the property.

