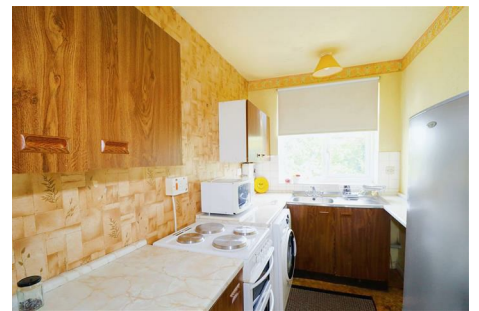


Castle Wildish



Queens Road , Hersham Village, KT12 5LB

A chance to acquire this one bedroom second floor apartment, forming part of the popular Surrey Lodge development. The property is conveniently situated for easy access to Walton on Thames Mainline Station and Hersham Village Centre and benefits from its own private garage, plus visitors parking spaces.

The property does require some updating and modernisation, although this has been reflected in the asking price. There is a south facing private balcony with access from the spacious double aspect living room and a good size kitchen for this type of property. Other benefits include a long lease [944 years] and the service charge is currently £498.60 per quarter inclusive of ground rent.

To be sold with no onward chain!

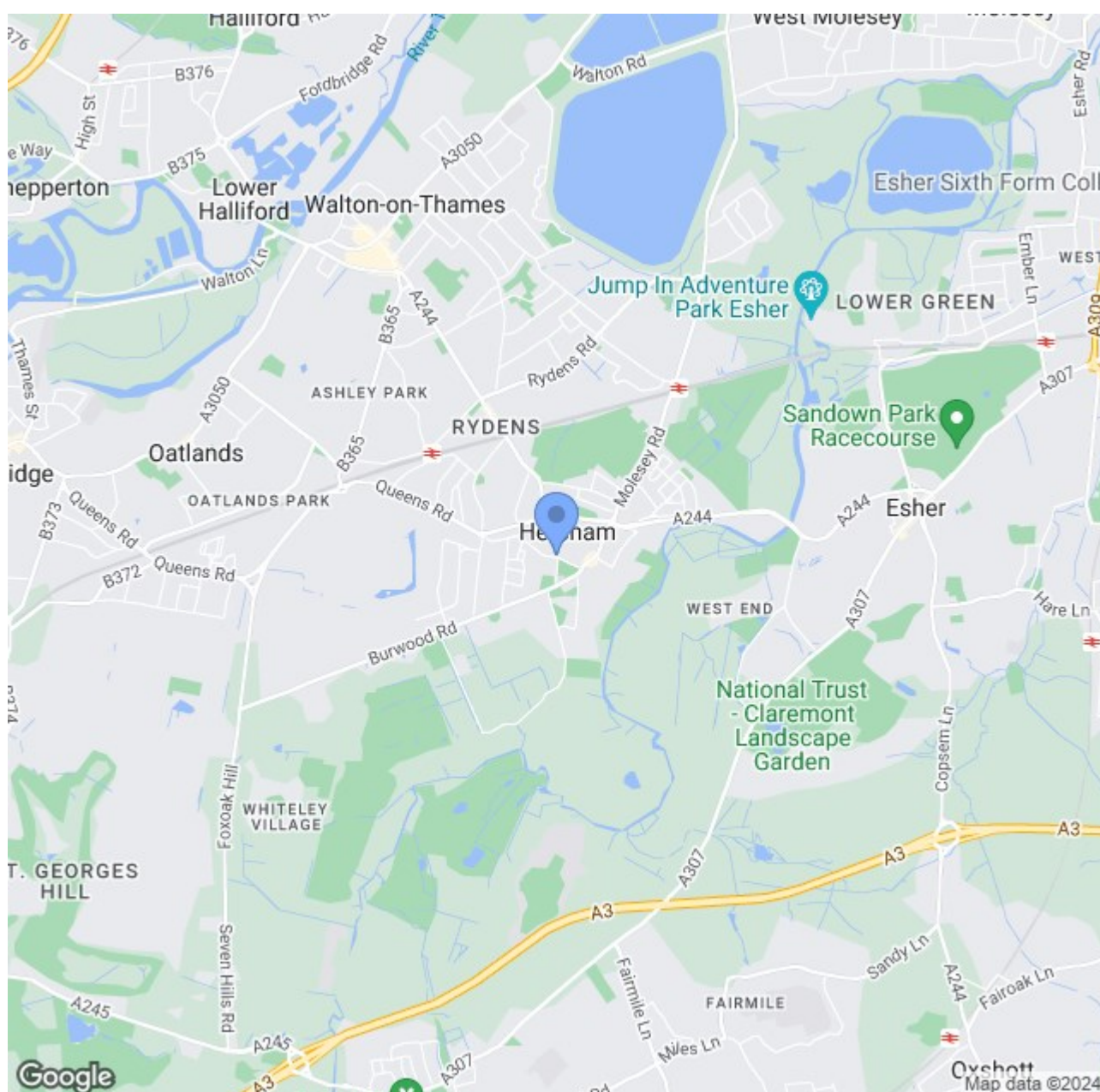
Offers In The Region Of £225,000

Queens Road

, Hersham Village, KT12 5LB



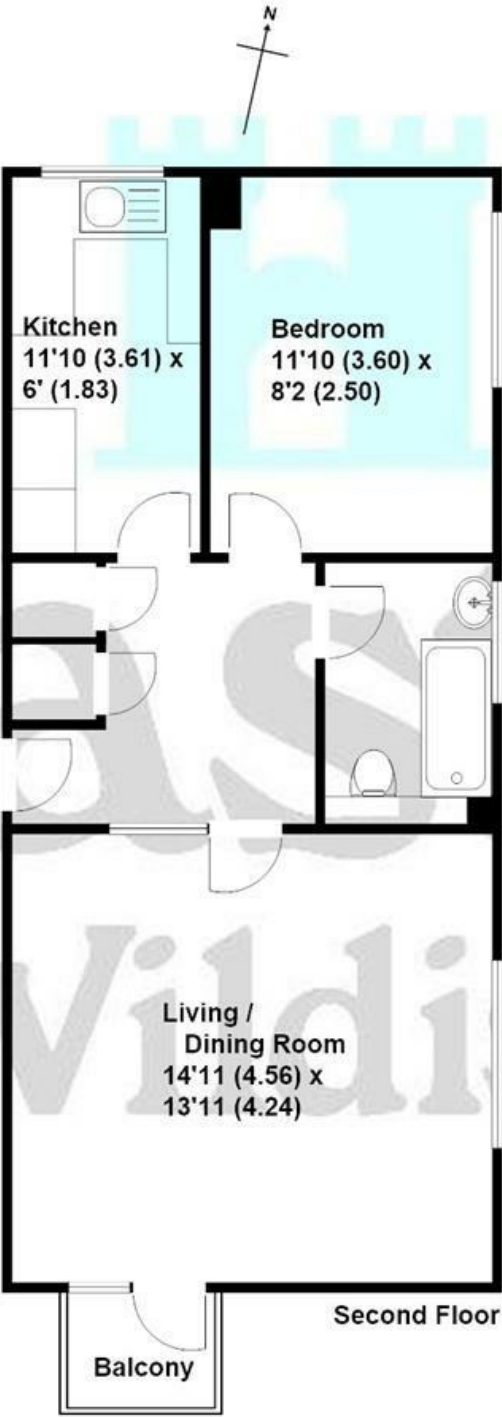
- Second Floor One Bedroom Apartment
- Private Garage & Parking
- South Facing Private Balcony With Stunning Views
- Some Modernisation Required
- Easy Access To Mainline Station
- Maintenance Charge £565.59 Per Quarter
- Long Lease 944 Years Unexpired
- Close To Hersham Village Centre
- No Onward Chain!





Queens Road, Hersham

Approximate gross internal floor area 519 sq/ft - 48.2 m/sq



These plans are not drawn to scale and are for representational purposes only. The services, systems and appliances listed in these details have not been tested by Castle Wildish, and no guarantee is given to their operational ability or efficiency. Copyright Castle Wildish 2023. Created by www.visionwithin.co.uk

These particulars, whilst believed to be accurate are set out as a general outline only for guidance and do not constitute any part of an offer or contract. Intending purchasers should not rely on them as statements of representation of fact, but must satisfy themselves by inspection or otherwise as to their accuracy. No person in this firms employment has the authority to make or give any representation or warranty in respect of the property.

