

Castle Wildish



Queens Road,
, Hersham Village, Walton on Thames, KT12 5LW

Castle Wildish are delighted to offer this charming semi detached Victorian Home, situated within easy walking distance of both Walton on Thames Mainline Station and Hersham Village Centre. The property offers a lovely modern interior, yet still retains some period features.

The ground floor has been extended to provide a newly fitted kitchen/day room which is open plan to the original dining room/second reception room. The living room/front reception room enjoys a central fireplace and deep bay window overlooking the garden and driveway.

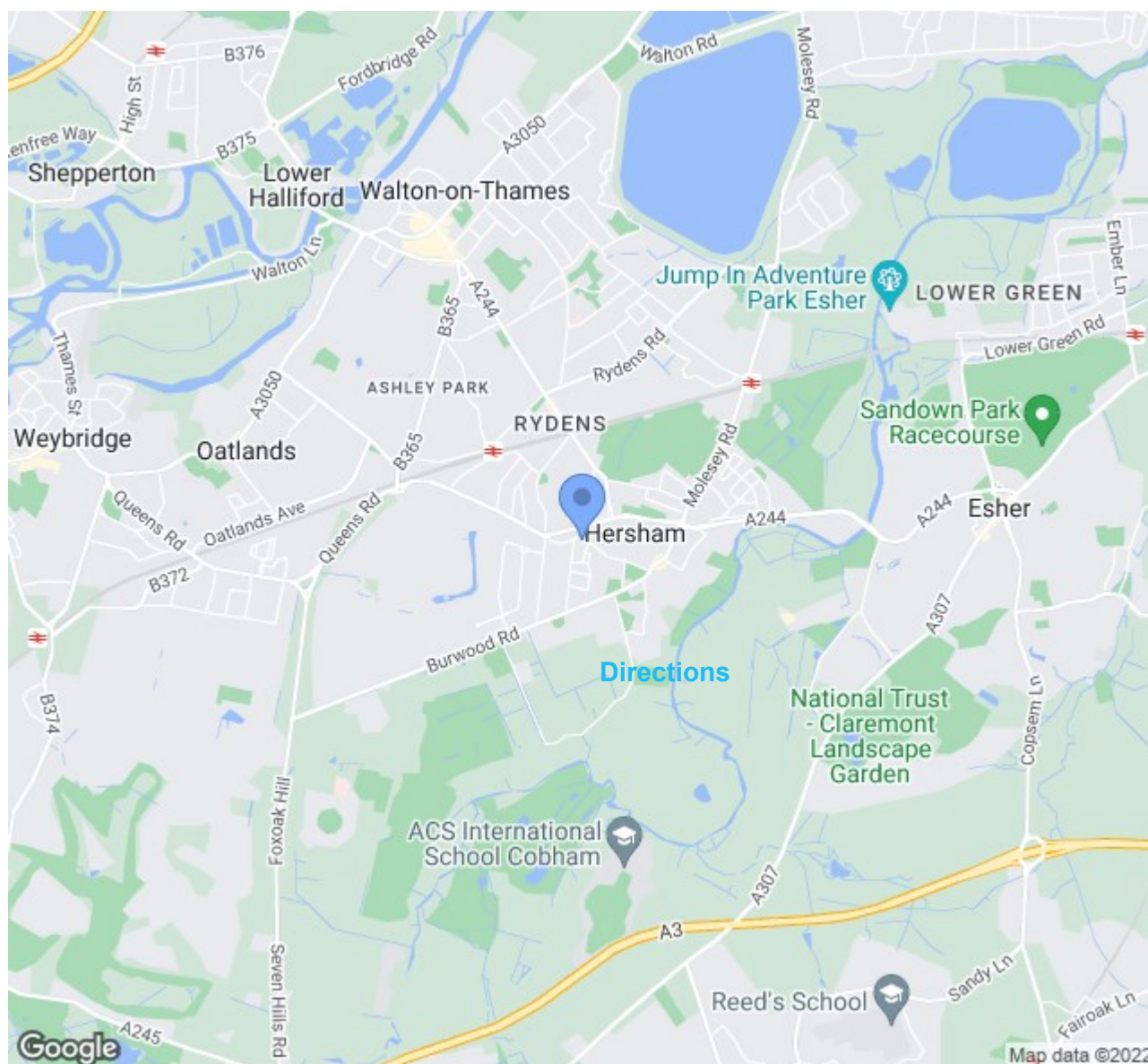
Outside the gravel front driveway has ample parking for up to five cars and side access leading into the south facing rear garden. The mature rear garden measures approximately 60' in depth and is completely paved for easy maintenance. The rear of this property is a real sun trap and to the rear of the garden is a useful insulated garden shed.

Offers Over £575,000

Queens Road, , Hersham Village, Walton on Thames, KT12 5LW

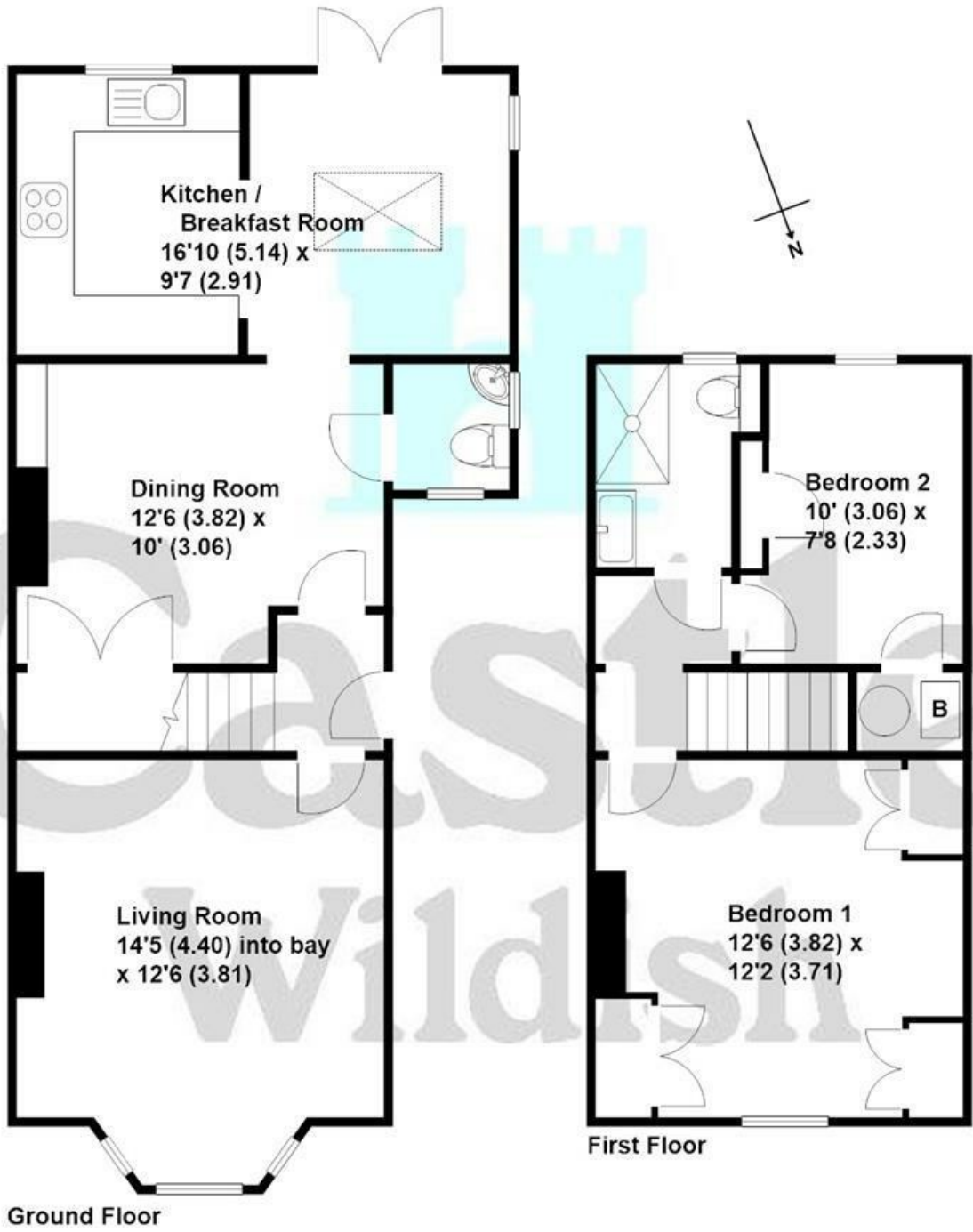


- Charming Two Bedroom Victorian Home
- Modern Fitted Kitchen day Room With Southerly Aspect
- Scope For Further Extension [STPP]
- Useful Large & Insulated Garden Shed/Store
- Superb Location Close to Village Centre and Walton on Thames Mainline Station
- Two Further Separate Reception Rooms
- Ground Floor Cloakroom
- Many Modern Convenience's, Yet Still Bags Of Character
- Off Street Parking & Private Driveway For Numerous Cars
- 60' South Facing Rear Garden





Queens Road, Hersham
Approximate gross internal floor area 868 sq/ft - 80.6 m/sq



These plans are not drawn to scale and are for representational purposes only.
The services, systems and appliances listed in these details have not been tested
by Castle Wildish, and no guarantee is given to their operational ability or efficiency.
Copyright Castle Wildish 2019
Created by www.visionwithin.co.uk

These particulars, whilst believed to be accurate are set out as a general outline only for guidance and do not constitute any part of an offer or contract. Intending purchasers should not rely on them as statements of representation of fact, but must satisfy themselves by inspection or otherwise as to their accuracy. No person in this firms employment has the authority to make or give any representation or warranty in respect of the property.

