

Castle Wildish



Hersham Road , Walton on Thames, KT12 1JZ

Introducing this impressive Victorian property on Hersham Road, Walton-on-Thames. This substantial 7-bedroom house offers a fantastic opportunity for restoration, with a delightful southwest facing rear garden providing a peaceful retreat.

Situated in a prime location, this property boasts easy access to both Walton-on-Thames Town Centre and Mainline Station, making it ideal for commuters. The house has previously been used as a 'House of multiple occupation' and now presents the chance to return it to its former grandeur as a Victorian Mansion.

With three floors and two bathrooms, this property offers plenty of space for a large family or those looking to convert it into a stunning family home. The front and back gardens, along with a private garden, provide ample outdoor space for relaxation and entertaining.

Located in the sought-after KT12 postcode, residents can enjoy the convenience of nearby amenities, schools, and recreational facilities. The property is also within easy reach of local parks, shops, and restaurants, making it a desirable place to call home.

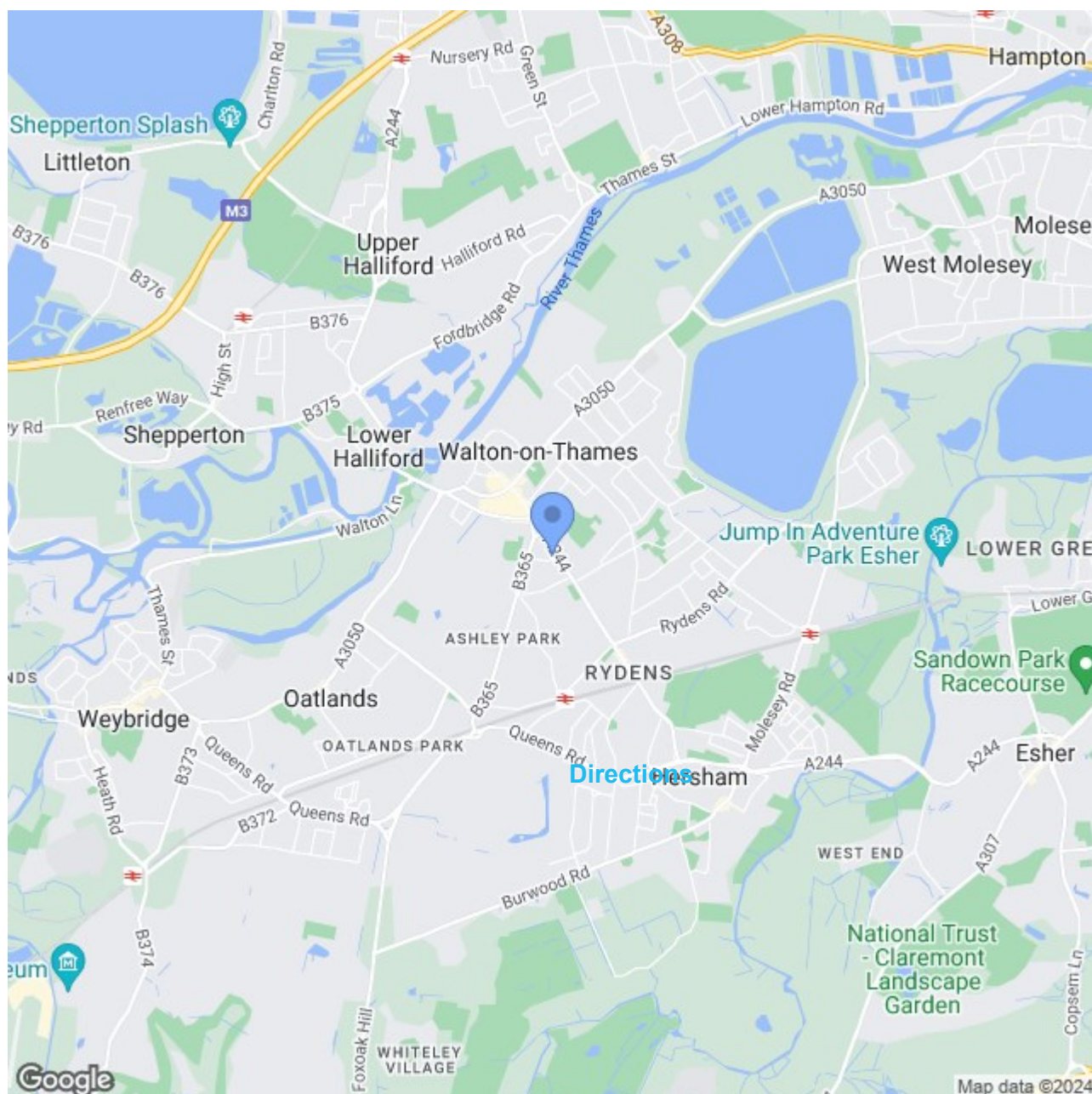
Offers Over £1,200,000

Hersham Road

, Walton on Thames, KT12 1JZ

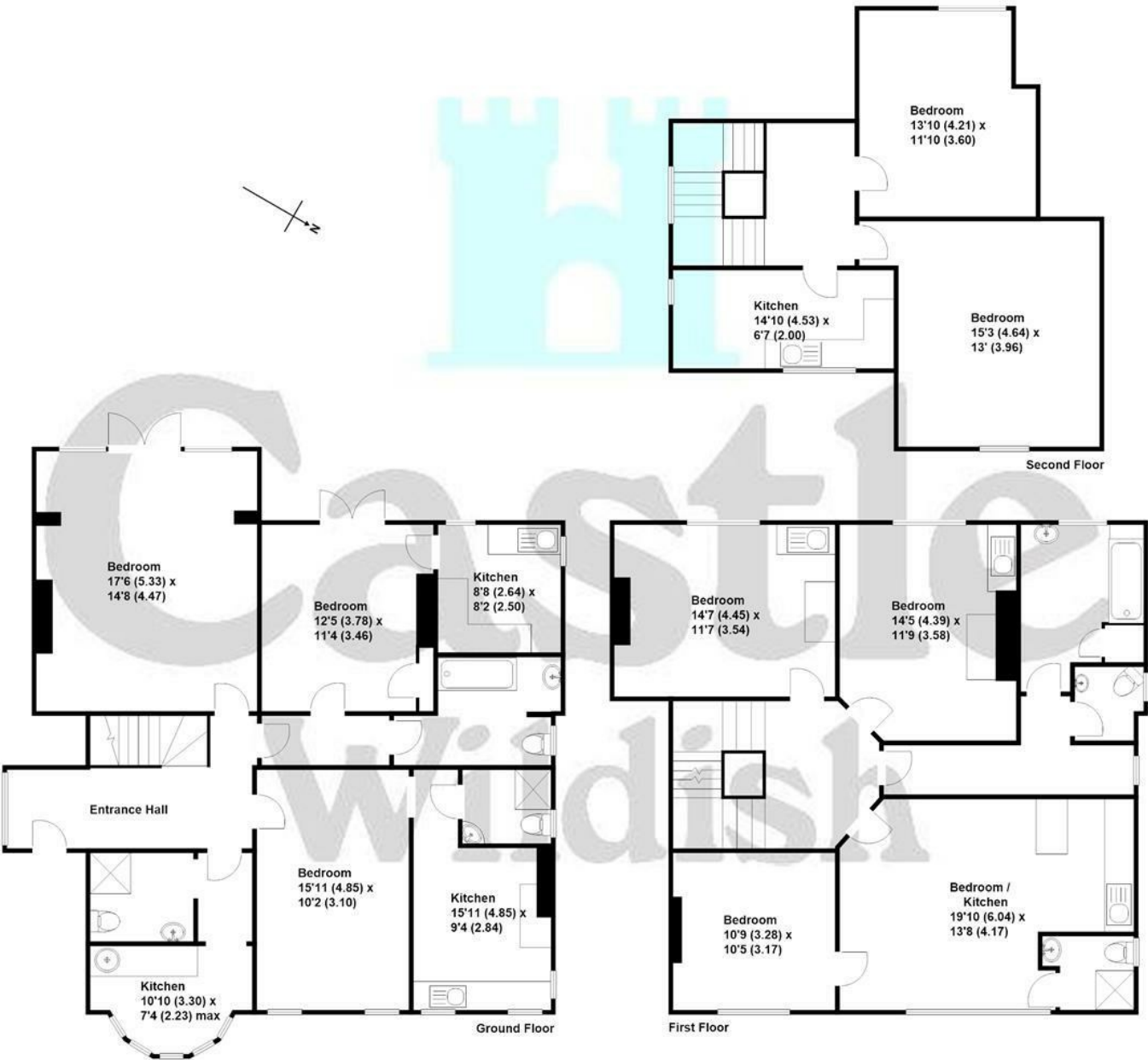


- Substantial Detached Victorian House In Need Of Renovation
- Close To Walton on Thames Town Centre
- To Be Sold With No Onward Chain!
- Vehicular Access Via Driveway, Parking To Rear & Garaging
- Possible Development Potential [STPP]
- Easy Access To Walton on Thames Mainline Station
- Delightful Southwest Facing Mature Rear Garden





Hersham Road, Walton-on-Thames
Approximate gross internal floor area 2831 sq/ft - 263 m/sq



These plans are not drawn to scale and are for representational purposes only. The services, systems and appliances listed in these details have not been tested by Castle Wildish, and no guarantee is given to their operational ability or efficiency. Copyright Castle Wildish 2021. Created by www.visionwaltham.co.uk

These particulars, whilst believed to be accurate are set out as a general outline only for guidance and do not constitute any part of an offer or contract. Intending purchasers should not rely on them as statements of representation of fact, but must satisfy themselves by inspection or otherwise as to their accuracy. No person in this firm's employment has the authority to make or give any representation or warranty in respect of the property.

