

Castle Wildish



Celandine Road

, Hersham Village, KT12 4NY

A chance to acquire this substantial three bedroom end of terrace home, with scope for improvement and extension [STPP]. The property occupies a generous corner plot, the benefit of a large rear garden, detached garage and private driveway with parking for several cars. Located in a quiet road with views over a central green and within easy walking distance of both Hersham Mainline Station and Village Centre.

To be sold with no onward chain!

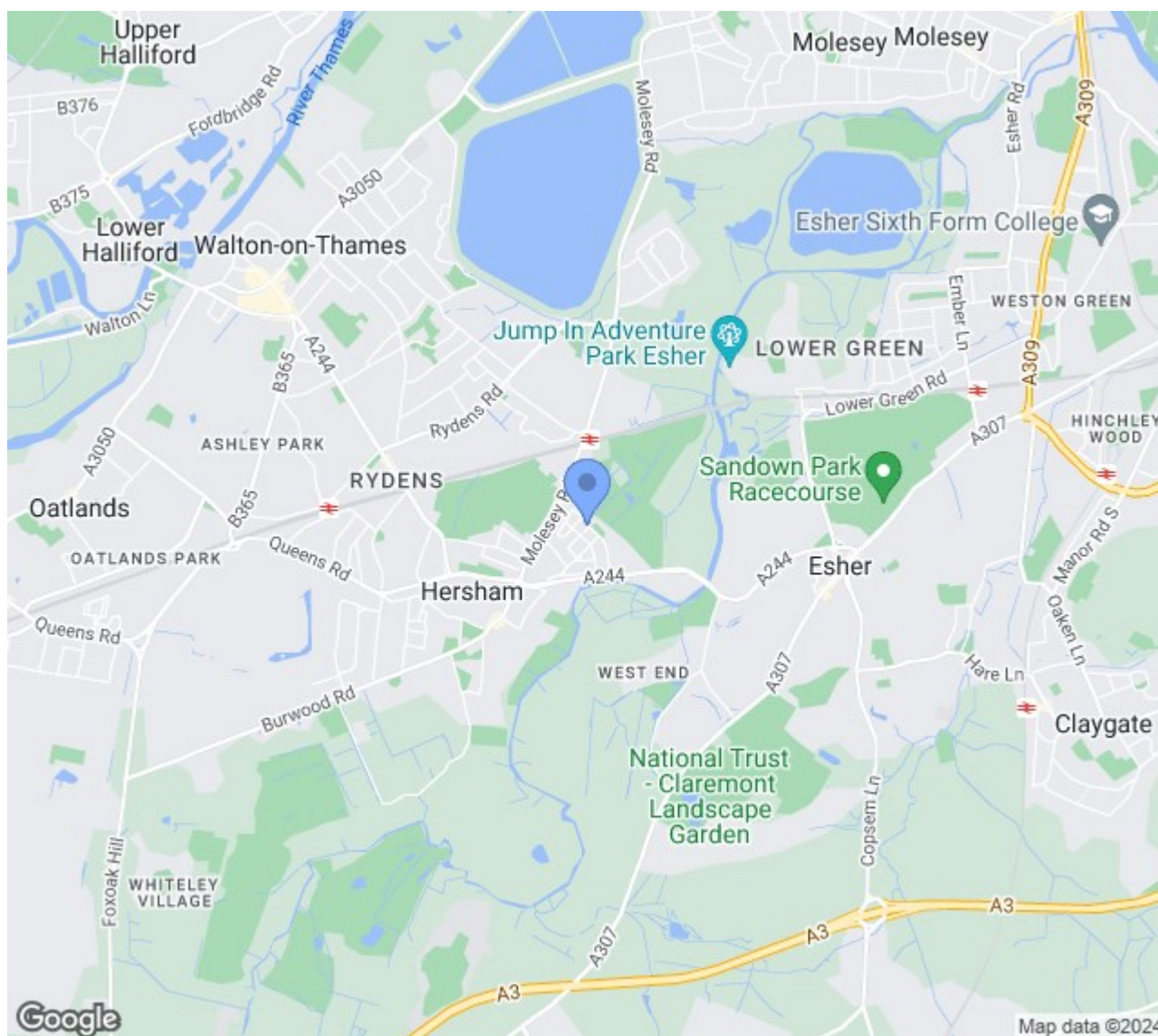
£535,000

Celandine Road

, Hersham Village, KT12 4NY



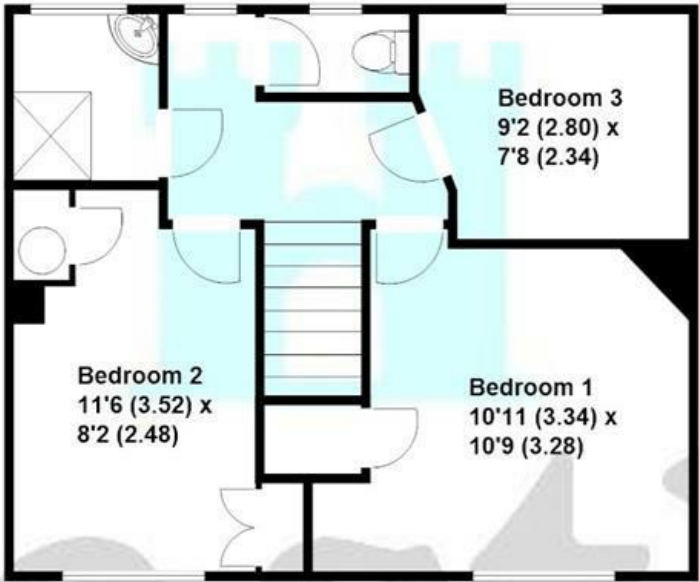
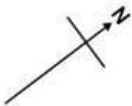
- Spacious Three Bedroom End Of Terrace House
- Detached Garage & Driveway For Several Cars
- Large Corner Plot Rear Garden
- Two Separate Reception Rooms
- Full Gas Central Heating
- Easy Access To Mainline Station
- Modern Fitted Kitchen
- Quiet Residential Location
- To Be Sold With No Onward Chain!



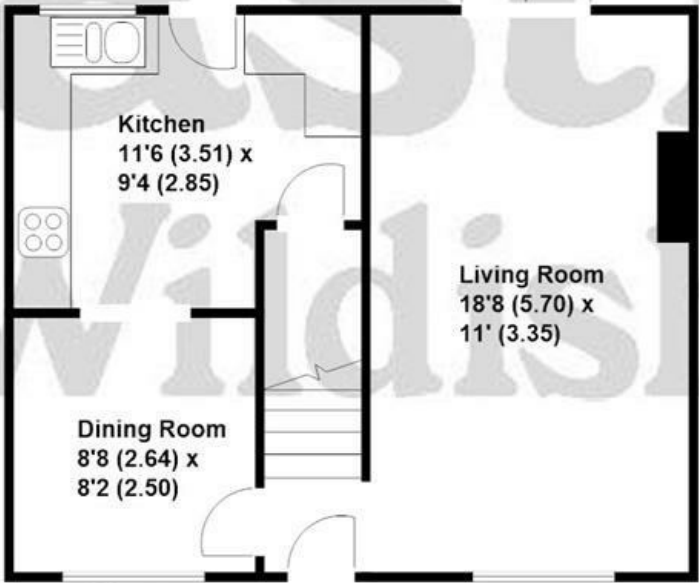


Celandine Road, Hersham

Approximate gross internal floor area 858 sq/ft - 79.7 m/sq



First Floor



Ground Floor

These plans are not drawn to scale and are for representational purposes only.
The services, systems and appliances listed in these details have not been tested
by Castle Wildish, and no guarantee is given, to their operational ability or efficiency.
Copyright Castle Wildish 2023
Created by www.visionwithin.co.uk

These particulars, whilst believed to be accurate are set out as a general outline only for guidance and do not constitute any part of an offer or contract. Intending purchasers should not rely on them as statements of representation of fact, but must satisfy themselves by inspection or otherwise as to their accuracy. No person in this firms employment has the authority to make or give any representation or warranty in respect of the property.

