

# Castle Wildish



## Burwood Road , Hersham Village, KT12 4AH

This stunning Victorian residence, has been transformed by the present owners and now enjoys a modern and stylish interior too match any property of twice this value. The accommodation is laid out over two floors and can be arranged in a number of ways to suit. There is a high specification integrated kitchen breakfast room with every conceivable modern convenience, which opens into the dining area and open plan living room. The third reception can become a fifth bedroom, as there is a ground floor shower/cloakroom off the galleried entrance hallway.

There are four very good size bedrooms to the first floor, the master bedroom enjoying a beautifully appointed en suite shower room. There is a further well appointed Family bathroom serving the three other bedrooms.

Located in the heart of the Village, with good communications to both Mainline Stations and good local Schools.

In all a very special house which must be seen to fully appreciate the quality workmanship within.

**Offers Over £895,000**

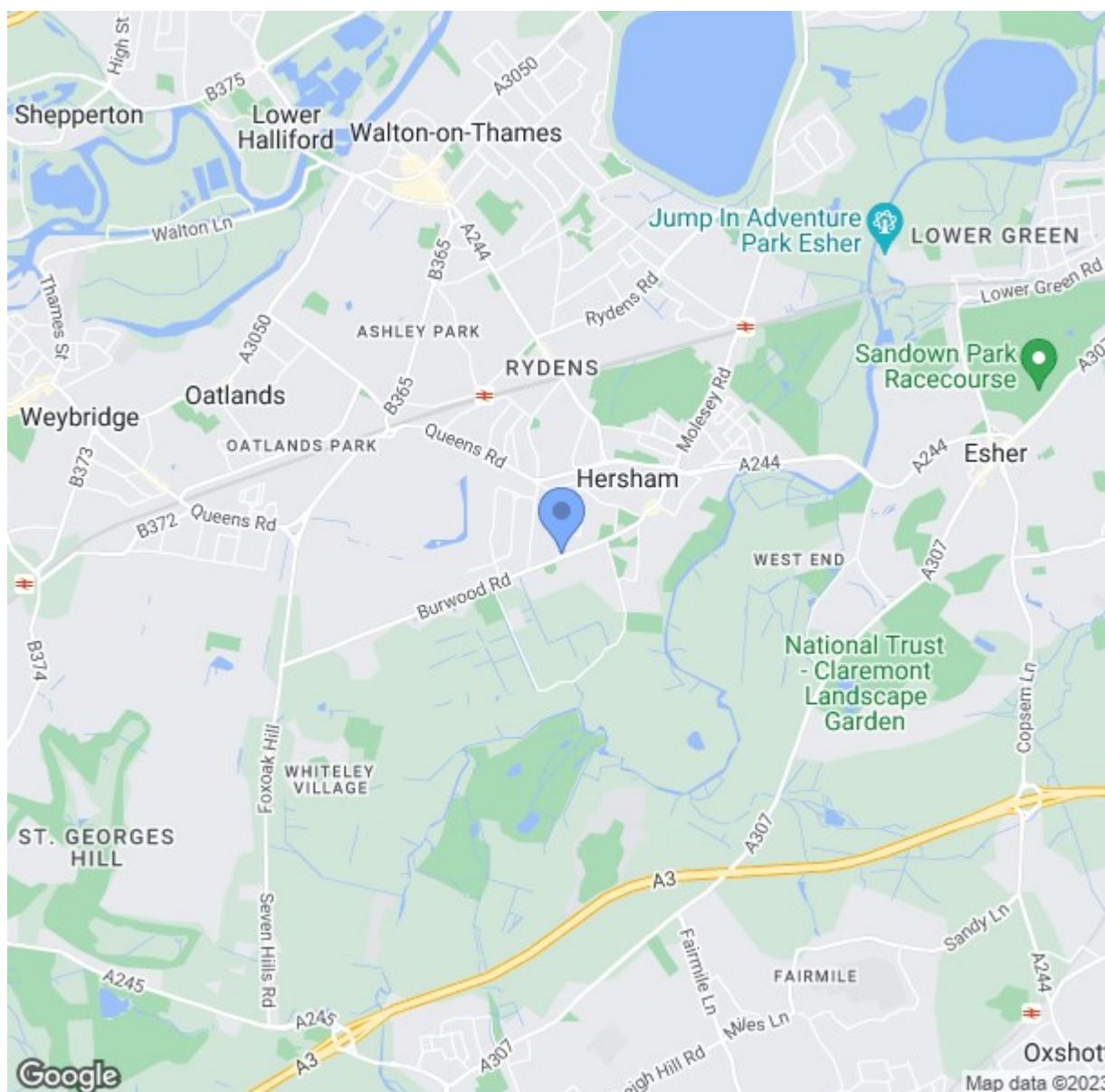


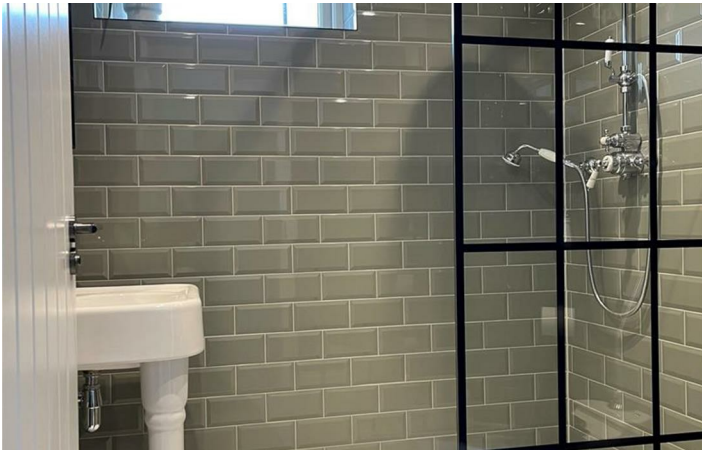
# Burwood Road

, Hersham Village, KT12 4AH



- Delightful Semi Detached Character Residence
- Master Bedroom With En Suite Shower Room
- Ground Floor Shower Cloakroom
- To Be Sold With No Onward Chain!
- Stunning Fully Integrated Kitchen Day Room
- Superb First Floor Family Bathroom
- Reception Hallway With Galleried Landing
- Corner Plot Position With A Wealth Of Off Street Parking
- Three Separate Reception Rooms
- South West Facing Garden

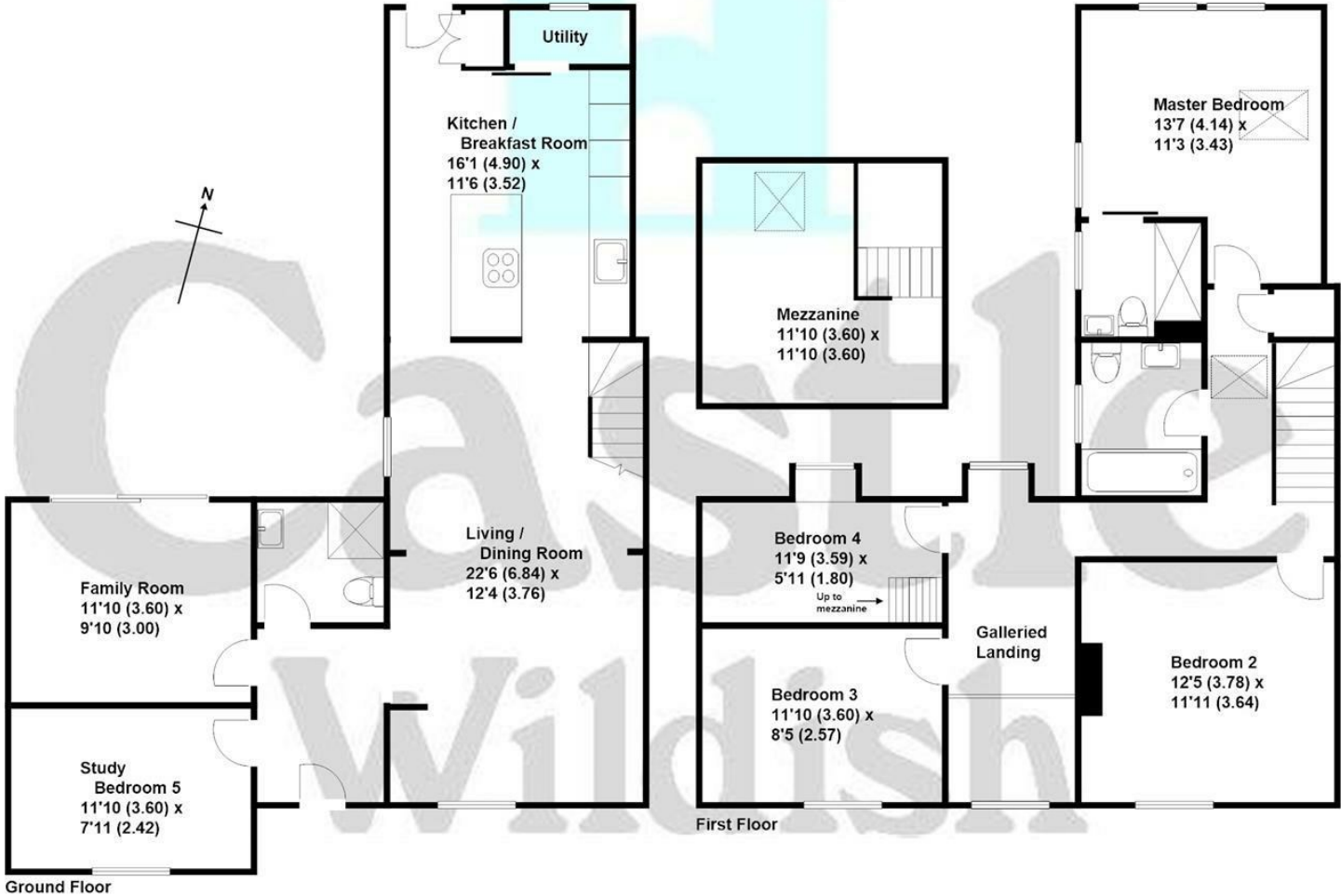






Burwood Road, Hersham

Approximate gross internal floor area 1697 sq/ft - 157.6 m/sq



These plans are not drawn to scale and are for representational purposes only.  
The services, systems and appliances listed in these details have not been tested  
by Castle Wildish, and no guarantee is given to their operational ability or efficiency.  
Copyright Castle Wildish 2023  
Created by www.visionwithin.co.uk

These particulars, whilst believed to be accurate are set out as a general outline only for guidance and do not constitute any part of an offer or contract. Intending purchasers should not rely on them as statements of representation of fact, but must satisfy themselves by inspection or otherwise as to their accuracy. No person in this firms employment has the authority to make or give any representation or warranty in respect of the property.

