

Castle Wildish



Church Green

, Hersham Village, KT12 4JA

A chance to acquire this spacious three bedroom end of terrace Home, which forms part of the popular Church Green Development. The property requires some updating and this is reflected in the asking price. The property enjoys one of the largest gardens, along with a single garage and vehicular access to the rear. Situated only a few minutes walk from Hersham Centre with a Waitrose and Lidl stores. Both Mainline Stations are also easily accessible.

To be sold with no onward chain!

Offers Over £475,000

Church Green

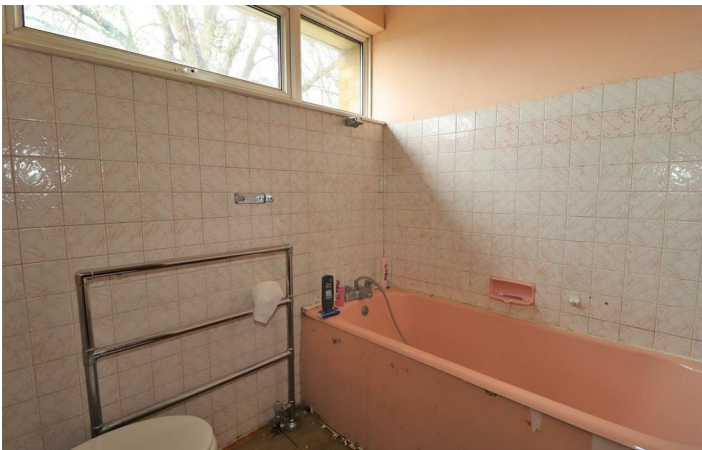
, Hersham Village, KT12 4JA



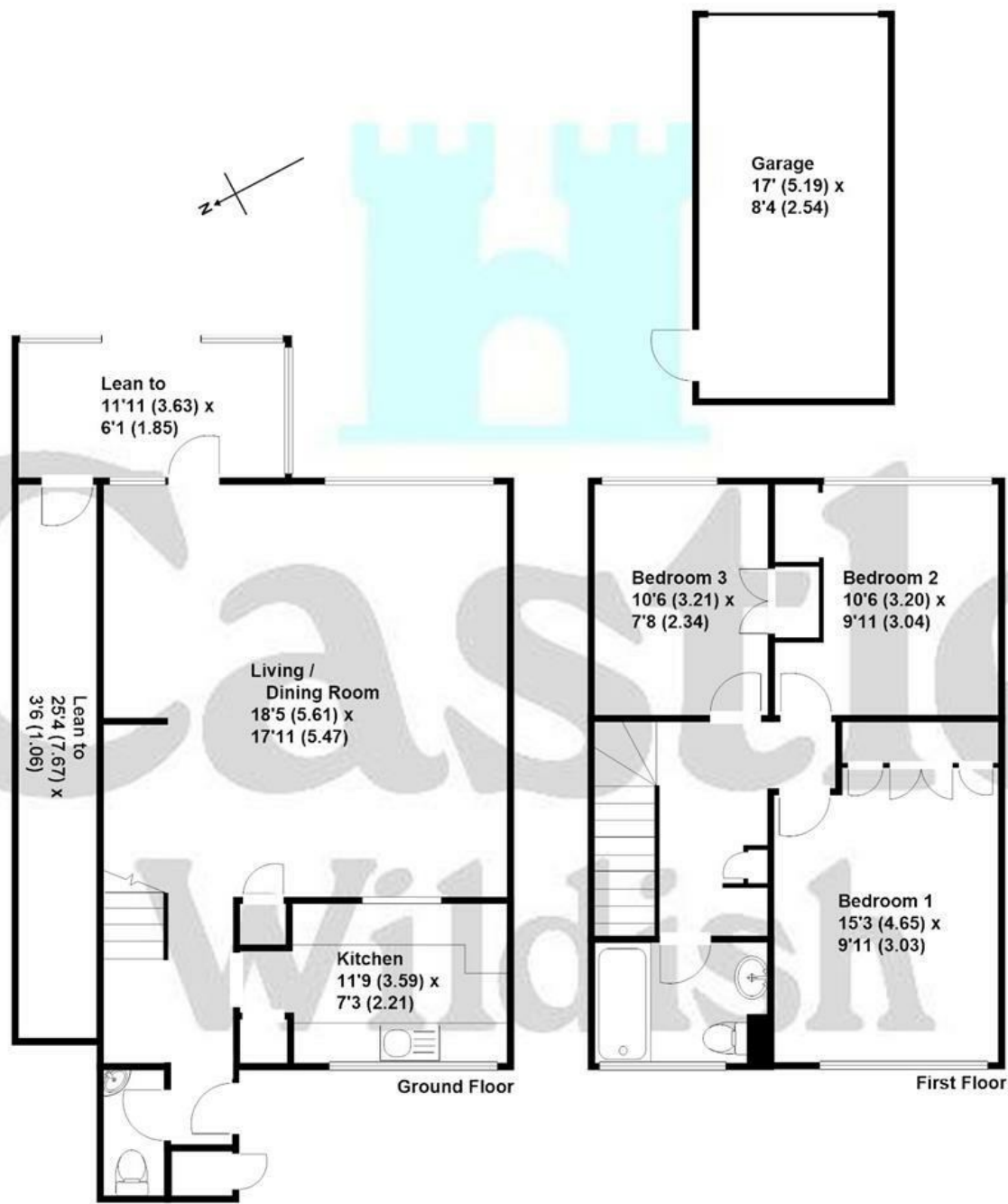
- Spacious Three Bedroom End Of Terrace House
- Large Open Plan Living Room
- Scope For Extension To Rear [STPP]
- Requiring Modernisation
- Ground Floor Cloakroom
- To Be Sold With No Onward Chain!
- Popular Location Close To All Amenities
- Garage With Direct Access From Rear Garden



[Directions](#)



Church Green, Hersham
Approximate gross internal floor area 970 sq/ft - 90 m/sq



These plans are not drawn to scale and are for representational purposes only.
The services, systems and appliances listed in these details have not been tested
by Castle Wildish, and no guarantee is given to their operational ability or efficiency.
Copyright Castle Wildish 2023
Created by www.visionwithin.co.uk

These particulars, whilst believed to be accurate are set out as a general outline only for guidance and do not constitute any part of an offer or contract. Intending purchasers should not rely on them as statements of representation of fact, but must satisfy themselves by inspection or otherwise as to their accuracy. No person in this firms employment has the authority to make or give any representation or warranty in respect of the property.

