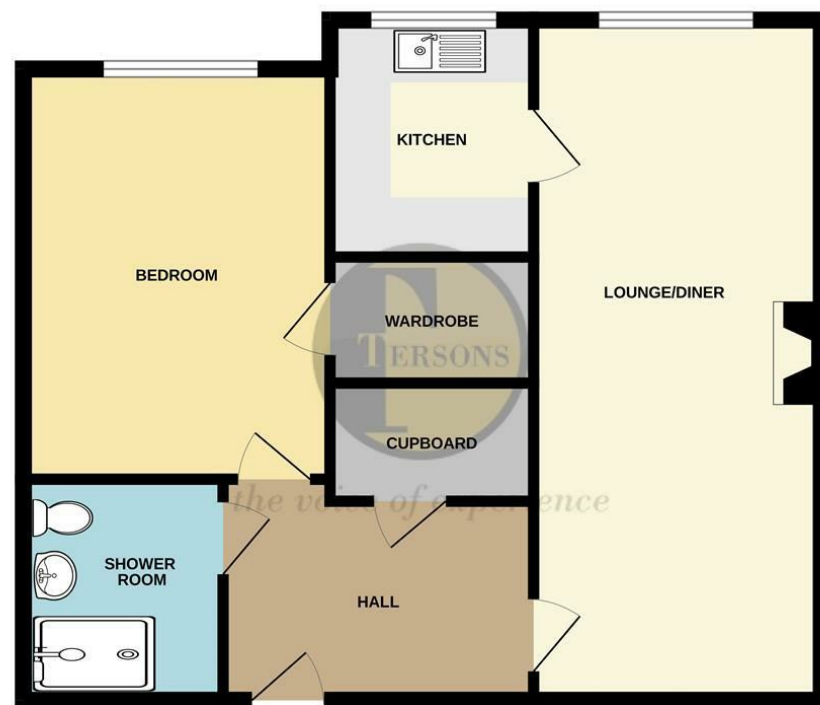




FIRST FLOOR



Whilst every attempt has been made to ensure the accuracy of the floorplan contained here, measurements of doors, windows, rooms and any other items are approximate and no responsibility is taken for any error, omission or mis-statement. This plan is for illustrative purposes only and should be used as such by any prospective purchaser. The services, systems and appliances shown have not been tested and no guarantee is given as to their operability or efficiency can be given.
Made with Metropix ©2024

Money laundering regulations - Intending purchasers will be asked to produce identification documentation at a later stage and we would ask for your co-operation in order that there will be no delay in agreeing the sale.

Tersons for themselves and for the vendors or lessors of this property whose agents they are give notice that:- (1) These particulars are set out as a general outline only for the guidance of intended purchasers or lessees and do not constitute part of an offer or contract. (2) All descriptions, dimensions, reference to condition, services or appliances and necessary commissions for use and occupation are given without responsibility and any intending purchasers or tenants must satisfy themselves as to their correctness. (3) The vendors or lessors do not make or give, and neither do Tersons for themselves nor any person in their employment any authority to make or give any representation or warranty whatever in relation to this property. (4) These details do not form part of any contract to purchase or lease the property.



www.tersons.com
29 Castle Street, Dover, Kent, CT16 IPT



Property Details

the voice of experience

Offers In The Region Of

£175,000

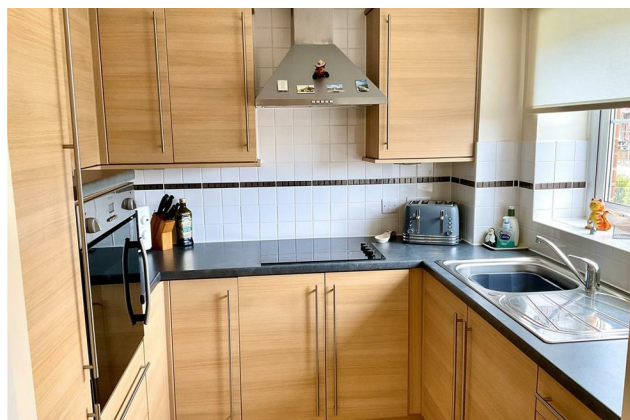


17 White Fields Court Manley Close, Whitfield, Dover CT16

- Exclusively to the over 60s.
- Residents Lounge
- Lift Access
- Chain Free
- One Bedroom Flat
- Energy Rating - C (76)



To arrange a viewing please call **01304 246111**



A SPACIOUS AND WELL MAINTAINED 1 BEDROOM 1ST FLOOR APARTMENT SET IN THE PRESTIGIOUS WHITE FIELDS COURT DEVELOPMENT. The apartment offers a lounge/diner, modern kitchen with built in appliances, large bedroom with walk in wardrobe and a shower room with walk in shower. Further benefits include double glazing, under floor heating and large storage cupboard. These apartments are available to the over 60s.

An early viewing is highly recommended on this rarely available chain free apartment.

This McCarthy and Stone development which was built in 2014 is set in the popular location of Whitfield which boasts many local amenities, including Post Office, general store, doctors surgery, and public house. Just outside the door is a useful bus stop with a regular service. Tesco, B&Q, B&M Stores and further superstores are also close by. Dover town centre is within 2-3 miles with the usual town facilities, including Priory main-line railway station with the fast-link train to London St Pancras in 1 hour 10 minutes. There are excellent access routes to the A2/M2 to Canterbury and beyond. There are a also good selection of shops along with the new shopping area at St James.

The accommodation comprises (measurements are maximum, taken into bays and extremes):-

Once entering the communal entrance door and walking through the residents lounge, take the lift or stairs to the first floor.

Apartment front door opening to entrance hall.



Entrance Hall

Spacious entrance hall. Doors to bedroom, lounge/diner and shower room. Door to large storage cupboard.

Storage Cupboard 5'9x 3'9 (1.75mx 1.14m)

Water cylinder. Wall mounted electric consumer box and meter.

Lounge/Diner 23'2 x 9'9 (7.06m x 2.97m)

Double glazed window to front. Door to kitchen.

Kitchen 7'7 x 6'9 (2.31m x 2.06m)

Fitted out with a modern range of worktop base and wall units. Integrated fridge/freezer, oven and hob with extractor hood over. Single bowl sink with splash back tiling around. Double glazed window to front.

Bedroom 13'4 x 10'6 (4.06m x 3.20m)

Double glazed window to front. Door to walk in wardrobe.

Walk in Wardrobe 5'8 x 4'3 (1.73m x 1.30m)

Shower Room 7'1 x 6'9 (2.16m x 2.06m)

Large walk in shower cubicle. Low level WC and wash basin with cupboard under. Heated towel rail. Fully tiled walls and floor.

Residents Lounge

On the ground floor is a large residents' lounge with doors opening to the well maintained communal



gardens. Just off the lounge is a small kitchen area.

There is also a communal laundry room on the ground floor with a number of washing machines and dryers.

LEASE DETAILS

The vendor has advised that there is a lease of 125 years as from 2013. The annual ground rent is £425 which is paid half yearly.

The annual service charge for the current year is £4,123.80 and this can be paid monthly at a rate of £343.50.

We under stand that the service charge covers for the following items

- 24 Hour emergency call system
- Upkeep of gardens and grounds
- Heating in homeowner's apartments
- Building Insurance
- Water rates for the apartments
- Cost of the House Manager
- General maintenance of the external and communal areas.
- Cleaning of communal areas.



We understand that there is a guest suite which can be used by family members visiting at a cost of £25 per night, subject to availability.

Parking spaces can be purchased subject to availability, the fee is usually £250 per year but please check direct with the House Manager.

All of the above information should be checked by your legal representative before proceeding.

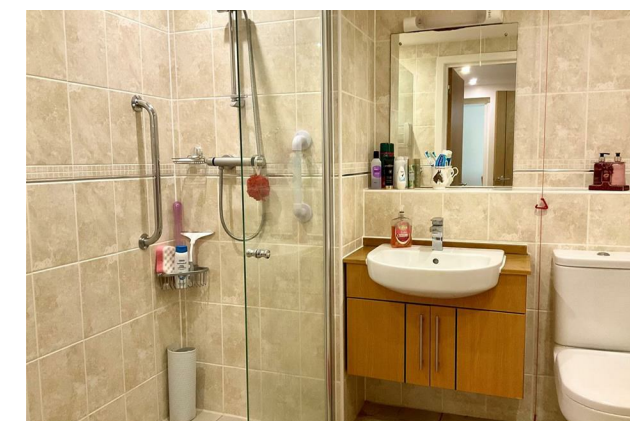
OUTSIDE

There is access to the well maintained communal garden with seating area.

Energy Rating - C (76)

Council Tax - Band A

Viewing
Strictly by arrangement with the agents, Tersons 01304 246111
www.tersons.com



www.tersons.com



www.tersons.com