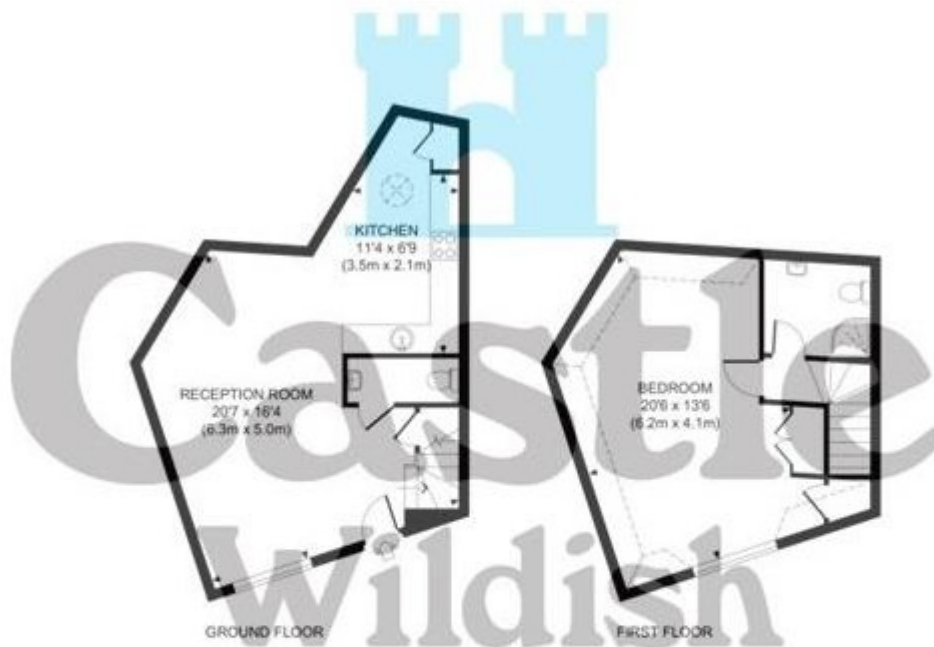


North Road, Hersham Village, Walton on Thames

Offers over £300,000



Approximate Gross Internal Area 732 sq ft / 68.0 sq m

These plans are not drawn to scale and are for representational purposes only.
The services, systems and appliances listed in these details have not been tested
by Castle Wildish, and no guarantee is given to their operational ability or efficiency.

Copyright Castle Wildish